

# QUICK START GUIDE

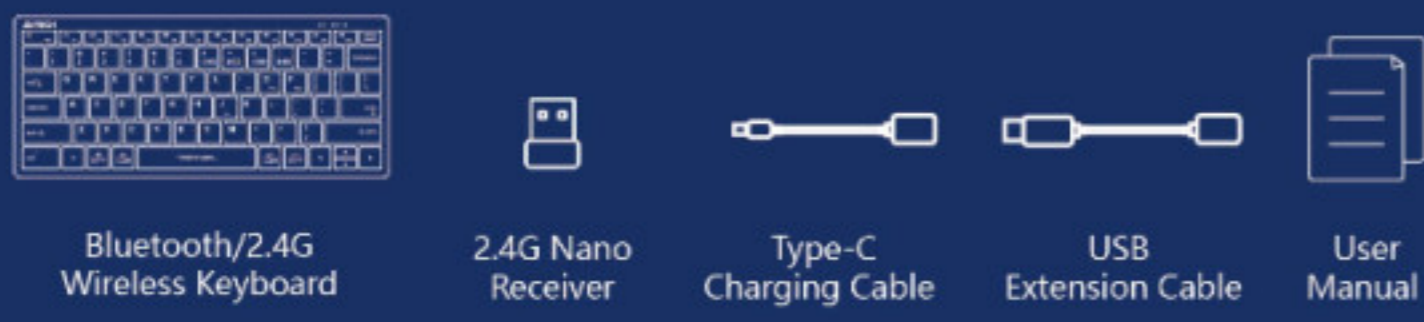


**FBX51C**

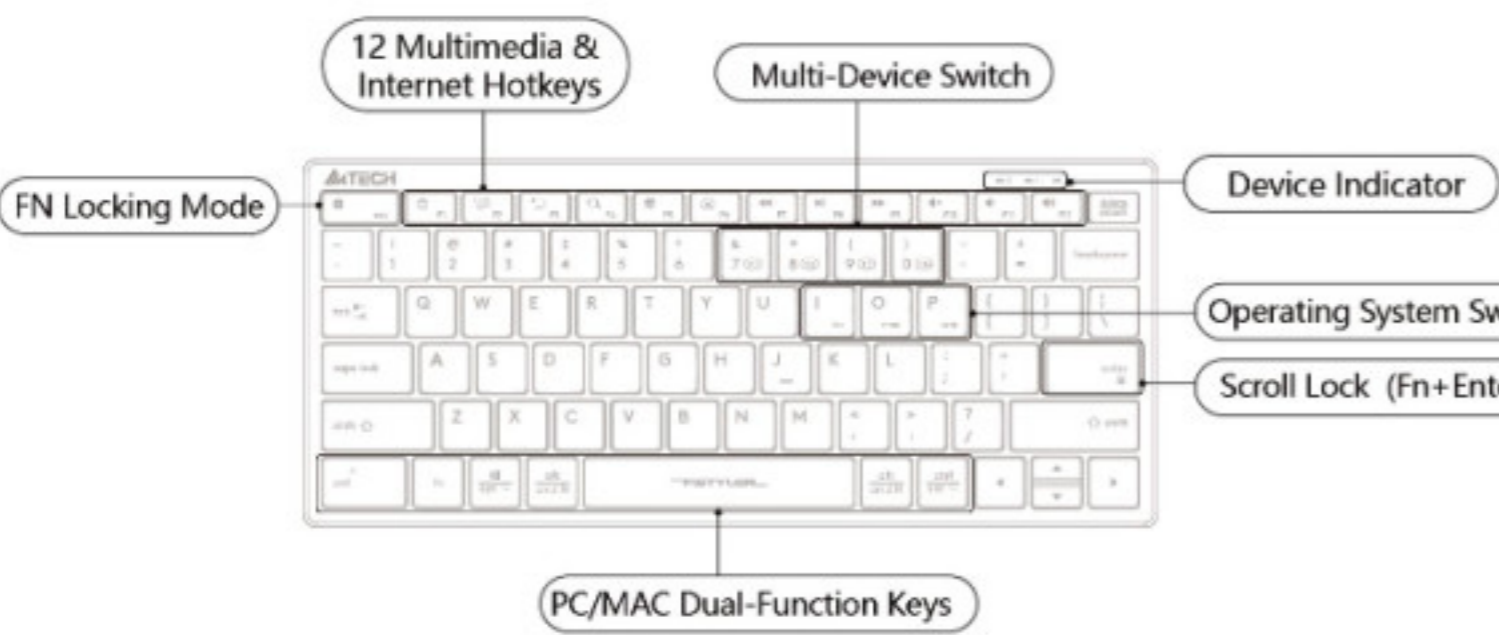
Bluetooth / 2.4G

FSTYLER COLLECTION

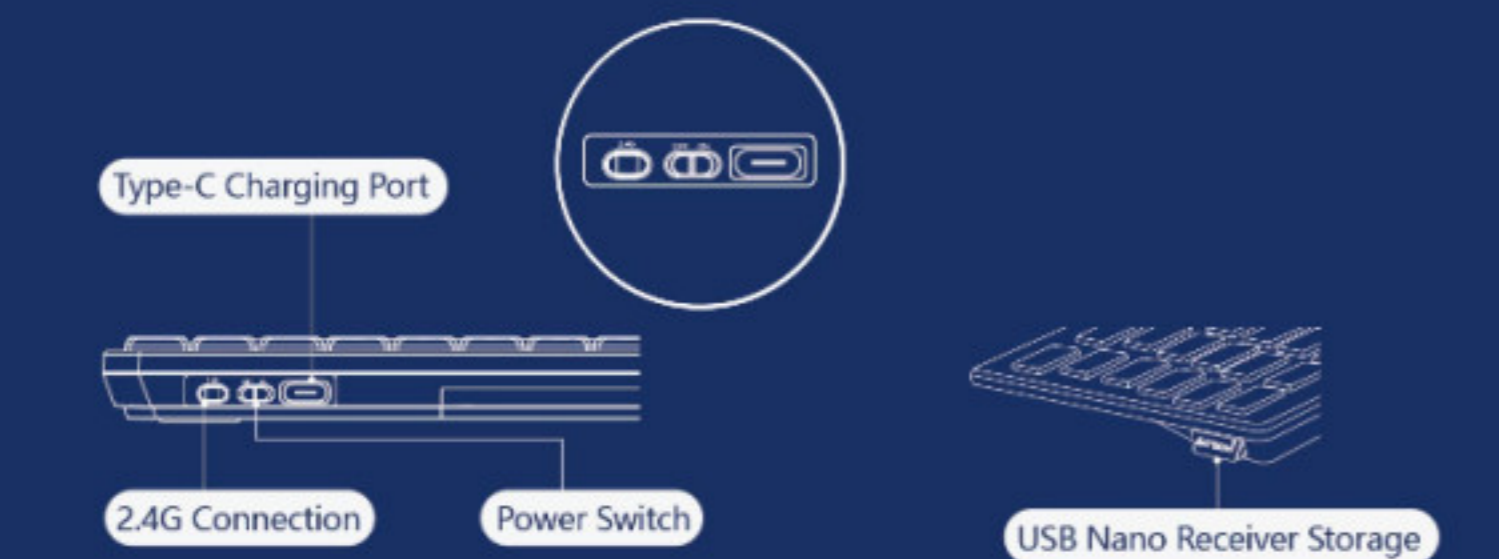
## WHAT'S IN THE BOX



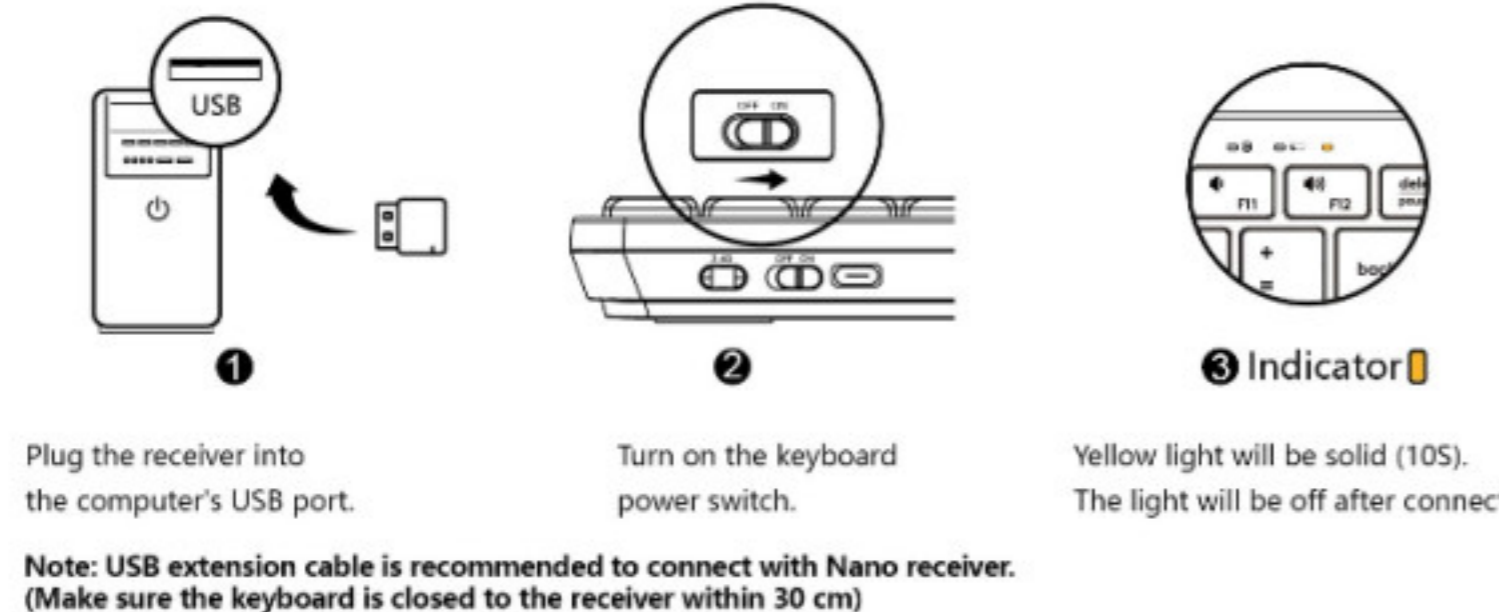
## THE FRONT



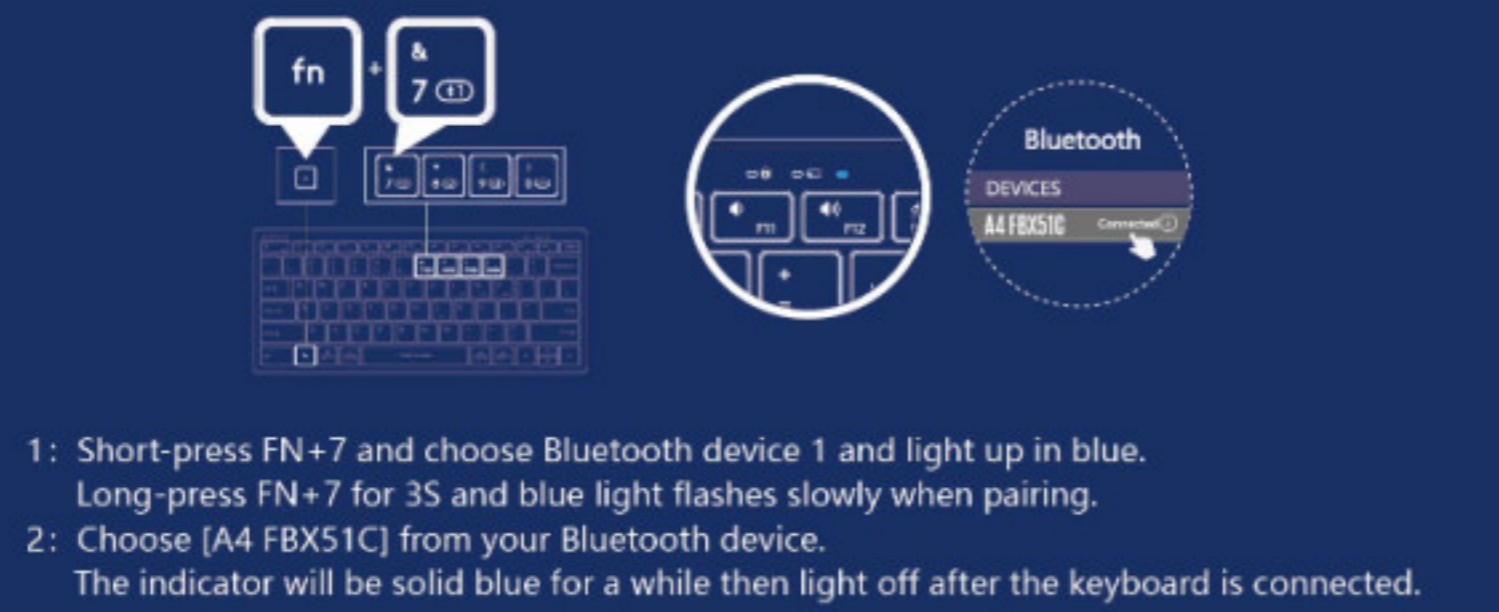
## THE FLANK / BOTTOM



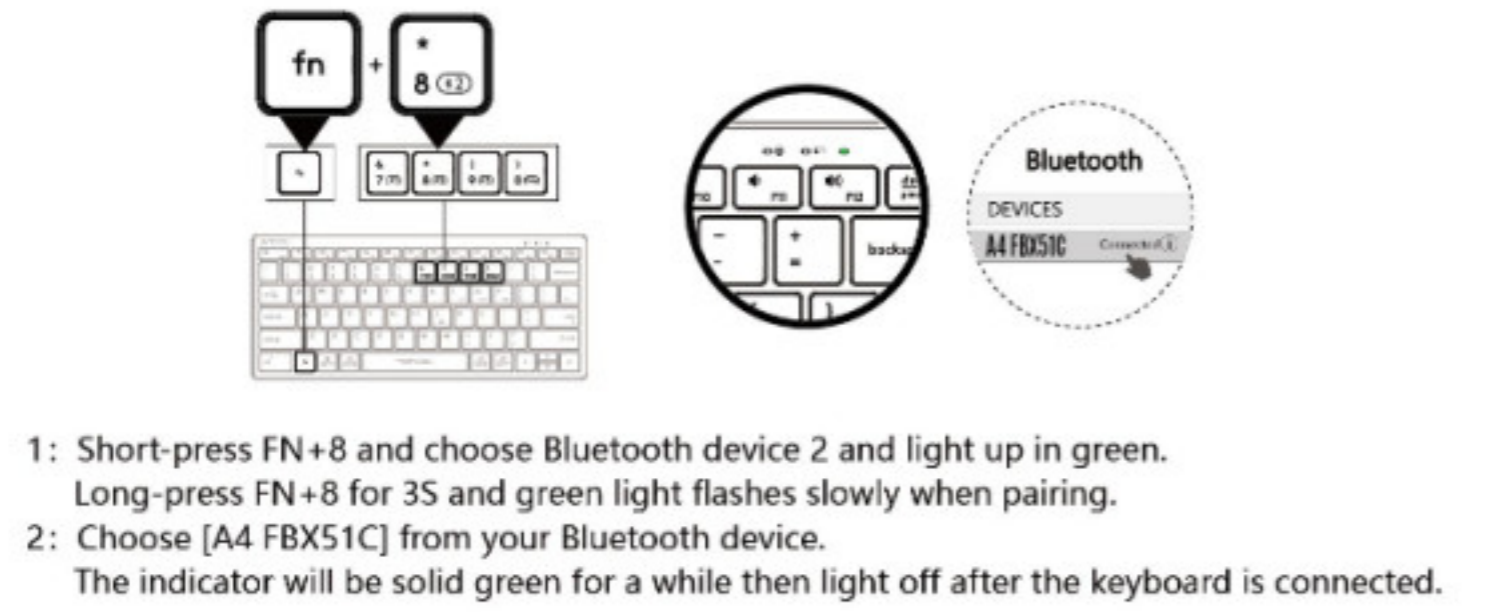
## CONNECTING 2.4G DEVICE



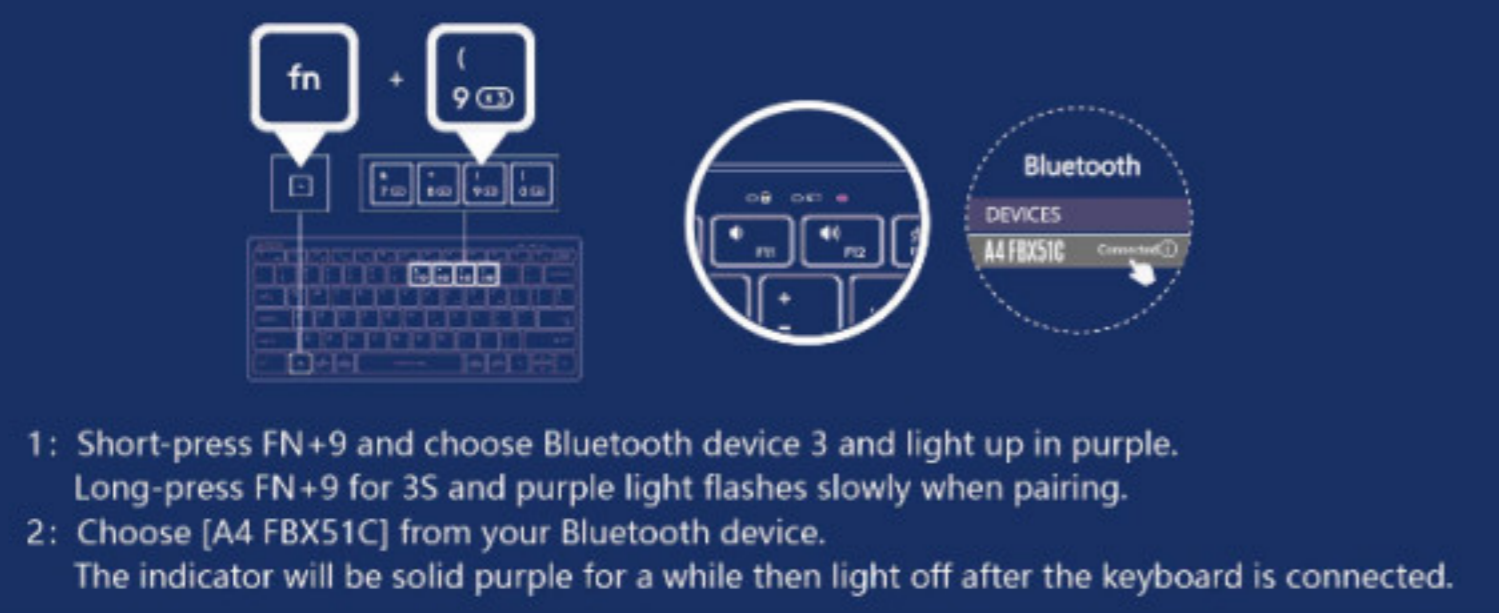
## CONNECTING BLUETOOTH DEVICE 1 (For Mobile Phone/Tablet/Laptop)



## CONNECTING BLUETOOTH DEVICE 2 (For Mobile Phone/Tablet/Laptop)



## CONNECTING BLUETOOTH DEVICE 3 (For Mobile Phone/Tablet/Laptop)



## OPERATING SYSTEM SWAP

Windows / Android is default system layout.

| System                               | Shortcut [Long-Press for 3S] | Device / Layout Indicator         |
|--------------------------------------|------------------------------|-----------------------------------|
| iOS                                  | Fn + I                       | Light will be off after flashing. |
| Mac                                  | Fn + O                       |                                   |
| Windows, Chrome, Android & HarmonyOS | Fn + P                       |                                   |

Note: The layout you used last time will be remembered. You can switch the layout by following the above step.

## INDICATOR (For Mobile Phone/Tablet/Laptop)

| Indicator                         | Yellow Light    | Blue Light              | Green Light                | Purple Light |
|-----------------------------------|-----------------|-------------------------|----------------------------|--------------|
| Multi-Device Switch               | Fn + S          | Fn + D                  | Fn + E                     | Fn + F       |
| Device Switch: Short-Press for 1S | Solid Light 10S | Solid Light 5S          |                            |              |
| Pair Device: Long-Press for 3S    | No Need to Pair | Pairing: Flashes Slowly | Connected: Solid Light 10S |              |

## FN MULTIMEDIA KEY COMBINATION SWITCH



## OTHER FN SHORTCUTS SWITCH

| Shortcuts           | Windows                    | Android                    | Mac / iOS                  |
|---------------------|----------------------------|----------------------------|----------------------------|
| Fn + [Pause]        | Pause                      | Pause                      | Pause                      |
| Fn + [Brightness +] | Device Screen Brightness + | Device Screen Brightness + | Device Screen Brightness + |
| Fn + [Brightness -] | Device Screen Brightness - | Device Screen Brightness - | Device Screen Brightness - |
| Fn + [Lock]         | Scroll Lock                | Screen Lock                | Screen Lock (iOS Only)     |

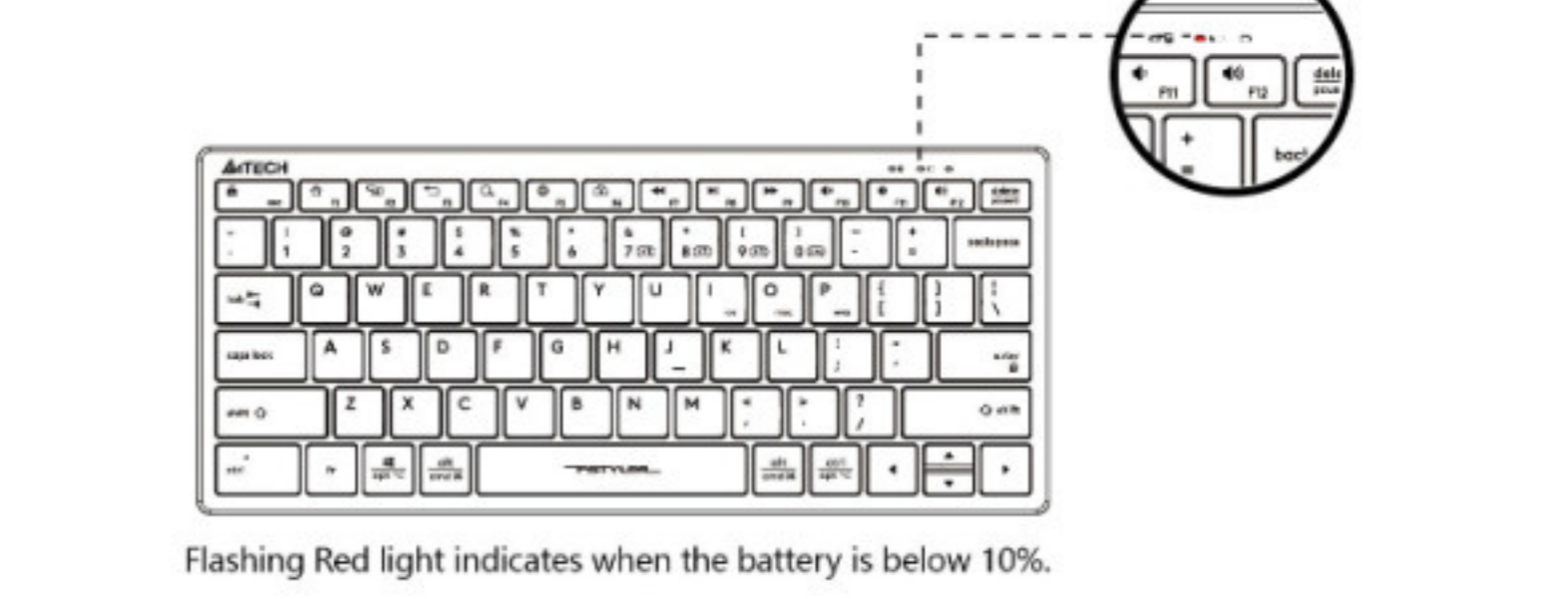
Note: The final function refer to the actual system.

## DUAL-FUNCTION KEY

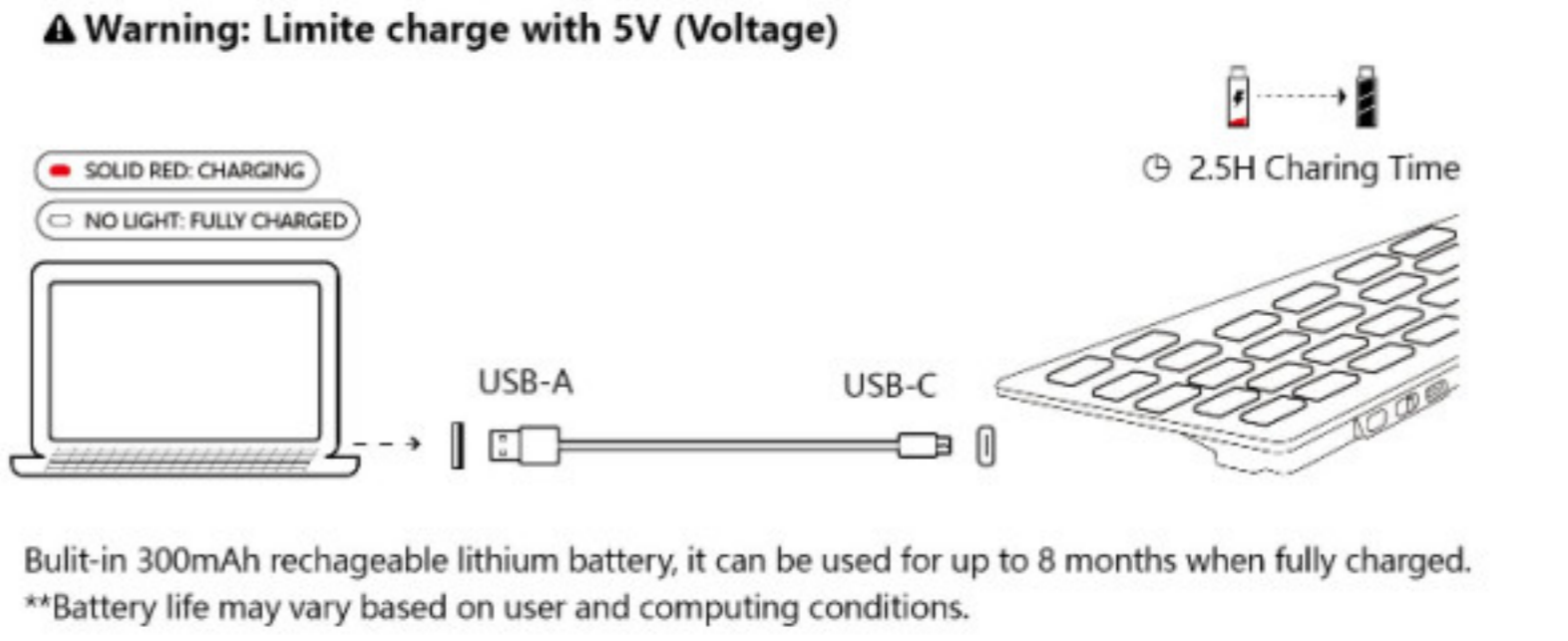
Multi-System Layout

| Keyboard Layout | Windows / Android (W/A)  | iOS / Mac (ios / mac) |
|-----------------|--|-----------------------|
| Fn + [F1-F12]   | Switching Steps:<br>① Choose iOS layout by pressing Fn+I.<br>② Choose MAC layout by pressing Fn+O<br>③ Choose Windows / Android layout by pressing Fn+P. |                       |
| [Ctrl]          | Ctrl   | Control ^             |
| [Start]         | Start  | Option ~              |
| [Alt]           | Alt  | Command ⌘             |
| [Alt (Right)]   | Alt (Right)  | Command ⌘             |
| [Ctrl (Right)]  | Ctrl (Right)   | Option ~              |

## LOW BATTERY INDICATOR



## USB TYPE-C RECHARGEABLE



## SPECIFICATIONS

Model: FBX51C  
Connection: Bluetooth / 2.4G  
Operating Range: 5~10 M  
Multi-Device: 4 Devices (Bluetooth x 3, 2.4G x 1)  
Layout: Windows | Android | Mac | iOS  
Battery: 300mAh Lithium Battery  
Receiver: Nano USB Receiver  
Includes: Keyboard, Nano Receiver, USB Extension Cable, Type-C Charging Cable, User Manual  
System Requirements: Windows / Mac / iOS / Chrome / Android / Harmony OS...

## Q & A

- Question:** How to switch layout under different system?  
**Answer:** You can switch layout by pressing Fn + I / O / P under Windows | Android | Mac | iOS.
- Question:** Does the layout can be remembered?  
**Answer:** The layout you used last time will be remembered.
- Question:** How many devices can be connected?  
**Answer:** Interchange and connect up to 4 devices at the same time.
- Question:** Does the keyboard remember the connected device?  
**Answer:** The device you connected last time will be remembered.
- Question:** How can I know the current device is connected or not?  
**Answer:** When you turn on your device, the device indicator will be solid. (disconnected: 5S, connected: 10S)
- Question:** How to switch between connected Bluetooth device 1-3?  
**Answer:** By pressing FN + Bluetooth shortcut (7 - 9).

## WARNING STATEMENT

- The following actions may/will cause damages to the product.
- To disassemble, bump, crush, or throw into the fire, you may cause irrefutable damages in event of the lithium battery leakage.
  - Do not expose under the strong sunlight.
  - Please obey all local laws when discarding the batteries, if possible please recycle them. Do not dispose of it as household garbage, it may cause a fire or an explosion.
  - Please try to avoid charging in the environment below 0°C.
  - Do not remove or replace the battery.
  - Please use the charging cable included in the package to charge the product.
  - Do not use any equipment with voltage exceeding 5V for charging.

EST. 1987  
**A4TECH**

FSTYLER COLLECTION



www.a4tech.com



Scan for E-Manual