

U1 4stage UF

WATER FILTRATION SYSTEM

Pull & Turn

Pull & Turn quick change filter replacement

Convenient

Twist and lock system with autoshut off valve

Simple

Simply the best for undersink

Clean

Clean and fresh water



Note

Please read through the instructions carefully before using or installing the product and ensure that the manual is kept in a safe place for future reference. The system must be properly installed and located in accordance with the installation instructions before it is used.

MICROFILTER

1. Safety Instructions

Attention U1 QUICK CHANGE UF WATER FILTRATION SYSTEM Customer

This system is intended for use on potable water supplies or disinfected water containing cysts. Do not use where water is microbiologically unsafe or with water of unknown quality. If bacterial contamination is present, a recognized method of water disinfection is required.

SAFE PRACTICES

Throughout this manual there are paragraphs set off by special headings.

Note Note is used to emphasize installation, operation or maintenance information which is important, but does not present any hazard.

CAUTION Caution is used when failure to follow directions could result in damage to equipment or property.

SAFETY PRECAUTION

• This appliance can be used by children aged from 8 years and above and persons with reduced physical, sensory or mental capabilities or lack of experience and knowledge if they have been given supervision or instruction concerning use of the appliance in a safe way and understand the hazards involved. Children shall not play with the appliance. Cleaning and user maintenance shall not be made by children without supervision.

• This appliance is not intended for use by persons (including children) with reduced physical, sensory or mental capabilities, or lack of experience and knowledge, unless they have been given supervision or instruction concerning use of the appliance by a person responsible for their safety.

Children should be supervised to ensure that they do not play with the appliance.

If you need the additional information,
please visit our website www.filtercompany.co.kr

2. Specifications

1st Stage



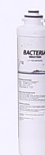
Sediment Filter

2nd Stage



Carbon Block Filter

3rd Stage



UF Filter

4th Stage



GAC Filter

Tube



3m Tube

Faucet



270mm Faucet

Typical System Flow Sequence

Sediment Filter → Carbon Block Filter → UF Filter → GAC Filter → Dispensing Faucet

Recommended Pressure for UF Filtration system 30~60psi

Sediment Filter (1st Stage) ----- 5micron
Carbon Block Filter (2nd stage) ----- 5micron
UF membrane (3rd stage) ----- 0.1micron
GAC Filter (4th stage) ----- Granular Activated Carbon

Replacement Filter

Model	Element Type	Capacity /Life Cycle	Micron Rating	Flow Rate	Benefit
SD	Sediment	- / 6months	5 um	0.5 GPM	Particulate, Dirt & Sand
CB	Carbon Block	1,500~2,500 gal/ 6months	5 um	0.5 GPM	Chlorine Taste & Odor
UF	Ultra Filtration	- / 12months	0.1 um	0.5 GPM	Particulate, Dirt & Sand, Cyst, Bacteria, E-Coli
GAC	Granular Activated Carbon	1,000~2,500 gal/ 6months	-	0.5 GPM	Chlorine Taste & Odor

Note Rated life and Capacity are depending on local water conditions and level of prefiltration. The disposable filter cartridge must be replaced every 6 months or 12 months, at the rated capacity or if a noticeable reduction in flow rate occurs.

Dimensions



MANIFOLD

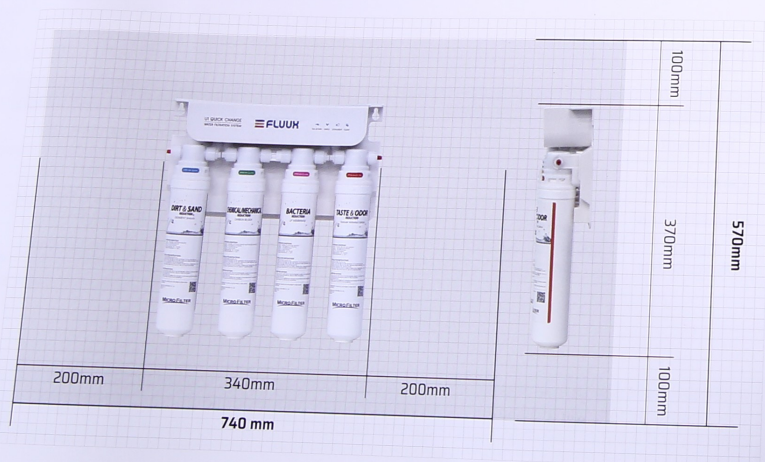
- 1. Filter Head
- 2. Inlet
- 3. Outlet

REPLACEMENT

- 4. Sediment Filter
- 5. Carbon Block Filter
- 6. UF Membrane Filter
- 7. Granular Activated Carbon Filter

Install Kit

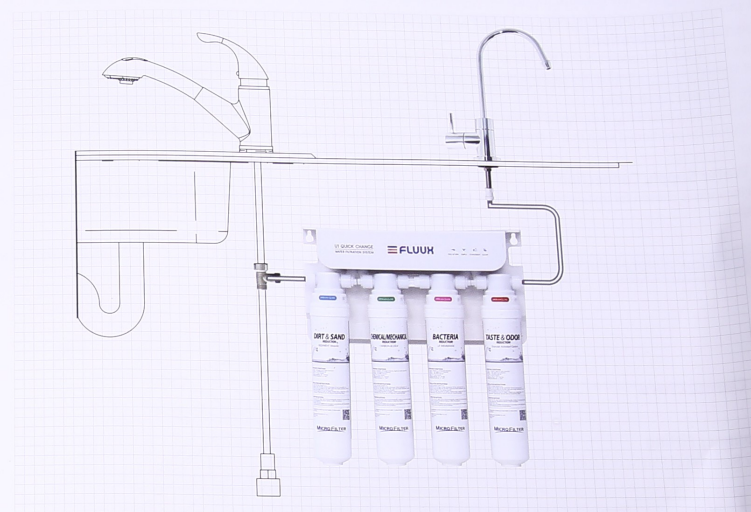
- 8. Faucet
- 9. 3m Tube
- 10. Screw
- 11. Adapter



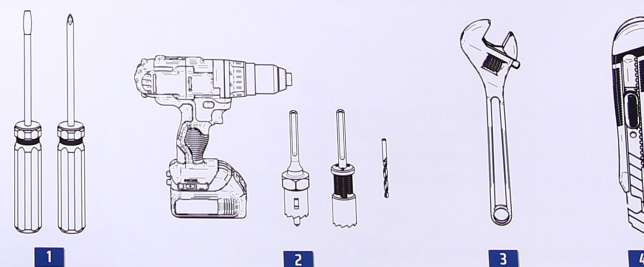
3
U1 4stage UF

3. Installation Instructions

Typical Installation Diagram



Recommended Tools



- 1. Screwdriver
- 2. Electric Drill with Hole Saw

- 3. Wrench
- 4. Utility Knife

4
U1 4stage UF

Step 1 - Select Component Installation Locations

• Dispenser Faucet

- The faucet is designed to be mounted on the rear lip of the sink. It may be installed in an existing sprayer attachment hole or in a hole drilled at the time of installation. It may also be mounted to an adjacent counter top. It should be positioned so that water is dispensed over the sink. A 7/8" diameter hole is required.

• Important considerations

- Access to the bottom (undersink) of the faucet is required for attachment of product water line.
- There should be no undersink obstructions which would prevent smooth tubing runs to the drain connections.

• Filter System Assembly

- The filter system assembly is designed to be mounted on any rigid vertical surface such as a cabinet sidewall, Sheetrock in exposed stud. It should be positioned such that there is access to an inlet water source. The installation should also allow convenient access for servicing.

• Inlet Water Supply Connection

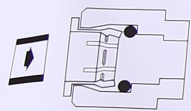
- Once a location is chosen for installation of the filter system assembly, select a nearby cold water line to provide the water source for the system.

Note Follow all local plumbing codes when connecting to service water.

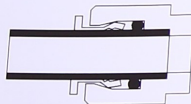
Tubing Connectors

• Quick-Connect Fitting

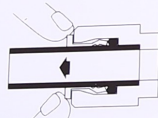
Insertion & Removal of Plastic or Copper Tubing



1. Simply push in tube to attach



2. Tube is secured in position.



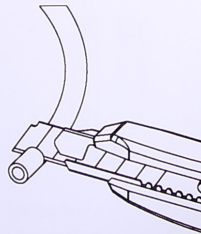
3. Push in collet from both sides to release tubing.

Connect :

Cut the tubing squarely with a sharp knife. Be careful not to crush the tubing. To avoid leaks, make sure the tubing end is smooth and free of burrs and abrasions. Lubricate the end of the tube with water or a light coat of silicone and push the tube end firmly into the fitting. You should feel it push past the O-ring. Avoid bending the tubing sharply away from the fitting.

Disconnect :

Hold the collar against the fitting body and pull the tube from the fitting. In the unlikely event that the connection leaks, remove and recut the tubing. Check the inside of the fitting for debris or O-ring damage. Reconnect. Push-to-connect tubing connectors grip the outside diameter of the tube. To help assure a reliable connection, it is important to use high quality tubing with a consistent outside diameter.



Cut tube squarely with a sharp knife.

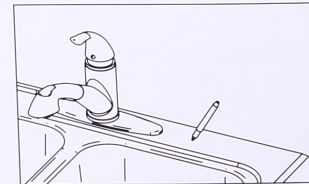
Step2. Faucet Installation

The U1 QUICK CHANGE UF WATER FILTRATION SYSTEM features reliable and convenient push-to-connect tubing connectors. Tubing is easily connected and disconnected from these fittings as follows. To simplify its access and installation, we suggest you install the faucet on the rear lip of the sink. It should be evenly positioned with the sink faucet and spray attachment. Should the spray faucet hole not be available for the installation, the sink must be drilled.

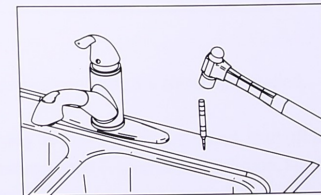
Note It is recommended retaining the services of a professional counter top craft person when a hole is needed in granite or other specialty counter top materials.

Sink Drilling Instructions

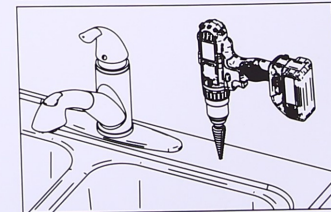
• Stainless Steel Sink



1. Select and mark the proper faucet location.



2. Center punch hole to provide a starting point for your drill.

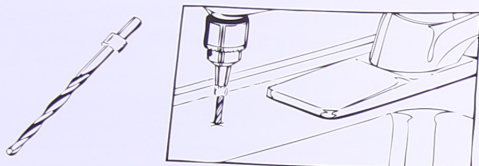


3. Drill a 7/8" hole in the sink using a stepped 7/8" drill bit. If no stepped bit is available, start by drilling a 1/4" hole. Using this hole as a starting point progressively drill larger holes. Increase drill size by 1/8" until you reach a 7/8" hole.

Sink Drilling Instructions

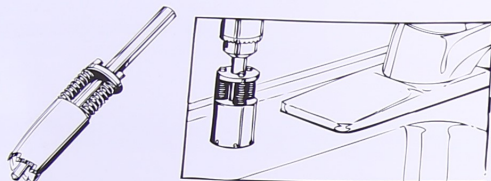
• Porcelain Enamel Sink

Follow these basic guidelines when drilling a porcelain sink:



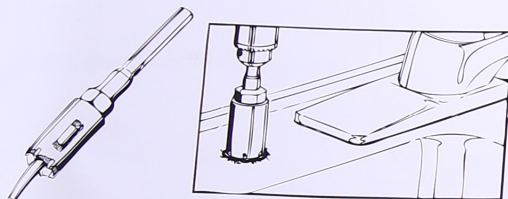
Pilot Drill

- Penetrate the porcelain to the base material.



Spring Loaded Porcelain Saw

- Protect the surrounding porcelain material.



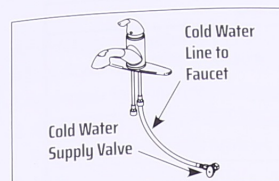
Finish Hole Saw

- Use the appropriate tool to drill the base material.

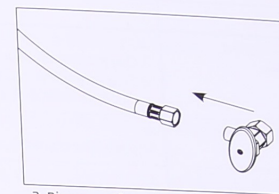
Step 3 - Install Adapter Valve on Water Supply

CAUTION

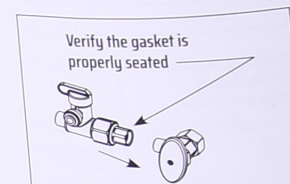
The Adapter valve should be connected to cold water supply only. Connection to hot water supply will damage the system and will void all warranty.



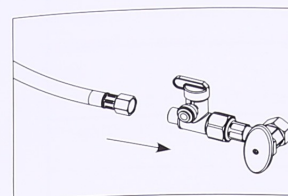
1. Shut off water at supply valve.



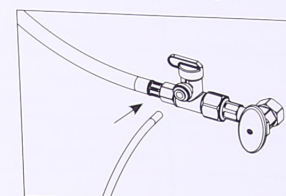
2. Disconnect hose from supply valve.



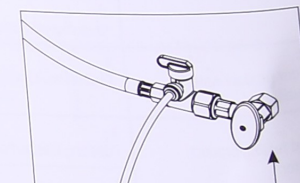
3. Install adapter valve on supply valve.



4. Connect riser hose to adapter valve.



5. Insert 1/4" orange tube into quick connect fitting on valve.



6. Open the cold water supply valve and check for leaks.

Step 4 - Start-Up

1. Check system to verify all components are correctly installed.
2. Open inlet valve.
3. Check system thoroughly for leaks. If any are found, shut off inlet valve and correct the issue.
4. Open faucet to flush carbon fines & sanitization solution. Flush for 5 minutes.
5. System is ready to use.

Troubleshooting Guide

If a problem cannot be corrected through the use of this troubleshooting guide, Please call our company directly at +82-43-531-7058.

Problem	Possible Cause	Remedy
1. Insufficient quantity of product water available to service.	a. Insufficient feed water flow.	a. 1. Clogged shut-off valve or feed tubing ; clean out or replace. 2. Clogged prefilter; replace. 3. Clogged manifold; clean or replace.
	b. Plugged prefilter.	b. Replace filter element.
	c. Plugged polishing filter.	c. Replace polishing filter.
	d. Shutoff malfunction.	d. Clean or replace shutoff.
2. Poor product water quality.	a. Shut off malfunction.	a. Replace shut off.
3. Bad tasting product water.	a. Polishing filter exhausted.	a. Replace polishing filter
	b. Plugged capillary tube.	b. Replace capillary tube; replace prefilter, if necessary.
4. External leakage.	a. Tubing not fully seated in fitting.	a. Check all fittings for tightness.
	b. Tubing abraded in seal area.	b. Recut tubing and redo connection.
5. Overflow at faucet air gap (gurgling sounds).	a. Concentrate tubing plugged.	a. Clean concentrate tubing of debris.
	b. Concentrate tubing not in continuous downward slope.	b. Eliminate loops or low spots in tubing.
6. Black specks in product water.	a. Carbon fines.	a. Flush polishing filter.

4. Limited One-year Warranty

Limited One-year Warranty

Any defect on materials or workmanship in the manufactured product. What does this warranty not cover?

1. Improper installation, delivery or maintenance.
2. This warranty shall not apply to any failures damaged by abuse, misuse, alteration or failure to follow operating condition/notices and installation instructions.
3. Use of this product where water is microbiologically unsafe or of unknown quality, without adequate disinfection before or after the system.
4. Damage to the product caused by accident, fire, floods or acts of God.
5. Incidental or consequential damage caused by possible defects with this application, it's installation or repair.
6. The system is warranted for a period of 1 year from the date of purchase.
7. The system is warranted for defects in material and workmanship only.

Exclusion of Implied Warranties

Your sole and exclusive remedy is product exchange as provided in this Limited Warranty. Any implied warranties, including the implied warranties, including the implied warranties of merchantability or fitness for a particular purpose, are limited to one year or the shortest period allowed by law.

PRODUCT	4 STAGE WATER SYSTEM	TERMS OF WARRANTY
MODEL NO.		LIMITED ONE YEAR
SERIAL NO.		
INSTALLATION DATE		
CUSTOMER NAME		
	TEL	

U1 4stage UF WATER FILTRATION SYSTEM

