

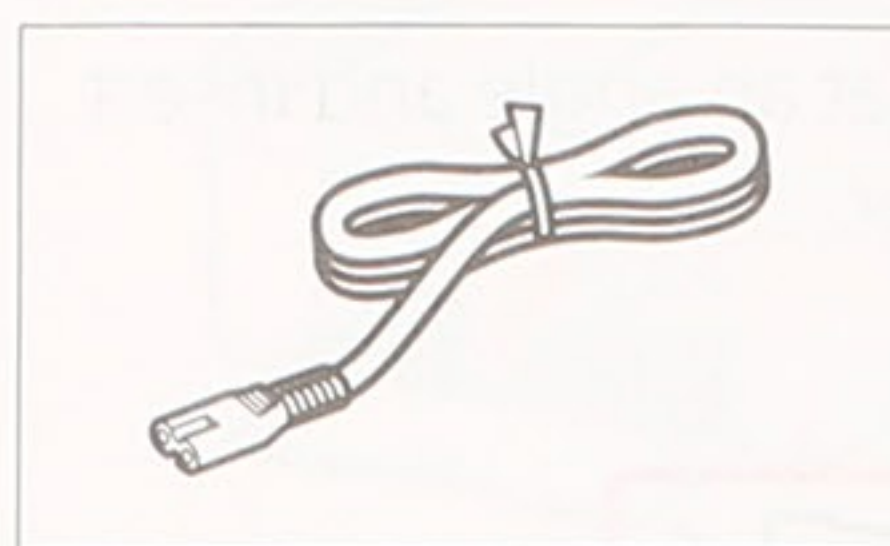
Setting up the printer

Web Setup

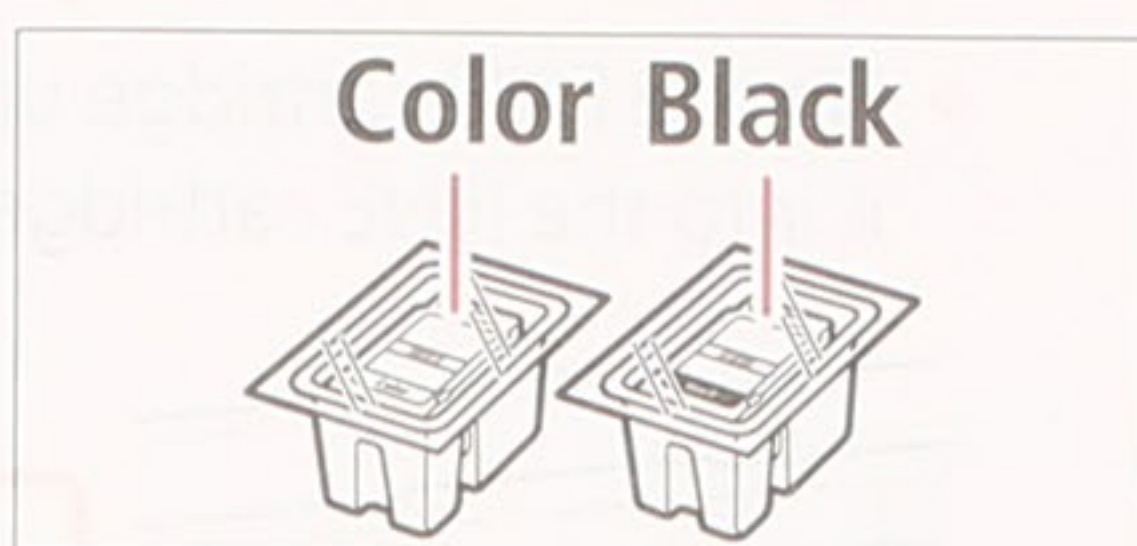
<http://ij.start.canon>



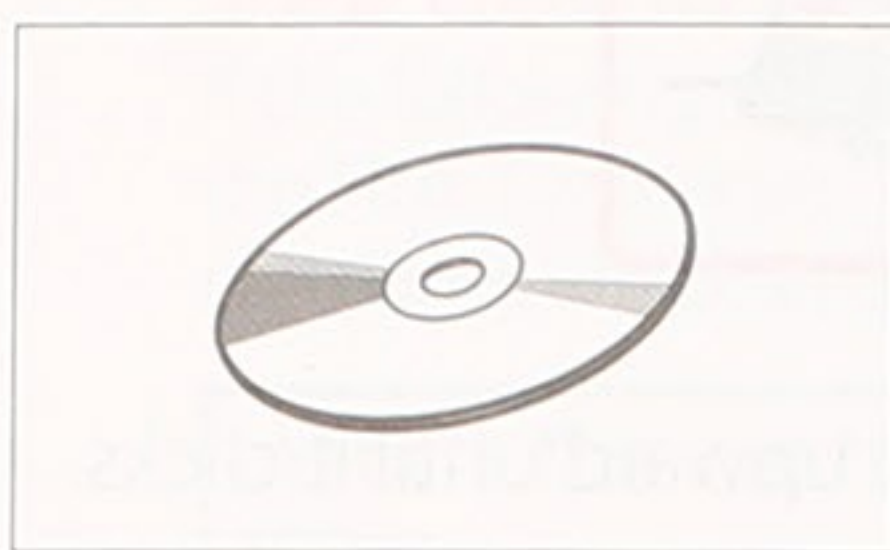
1. Box Contents



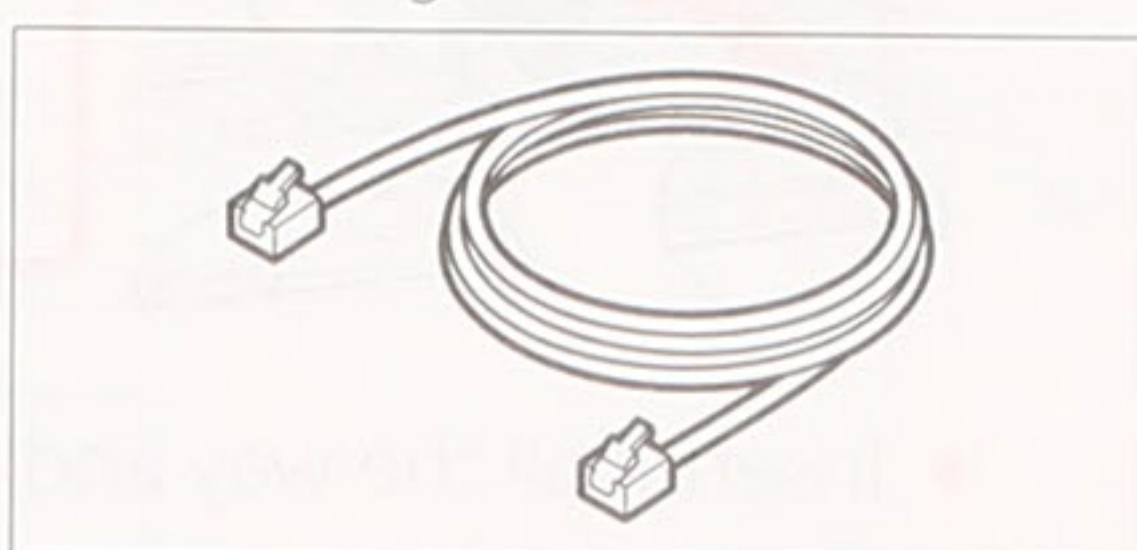
● Power cord



● FINE cartridges



● Setup CD-ROM



● Modular cable

- Safety and Important Information
- Getting Started (this manual)

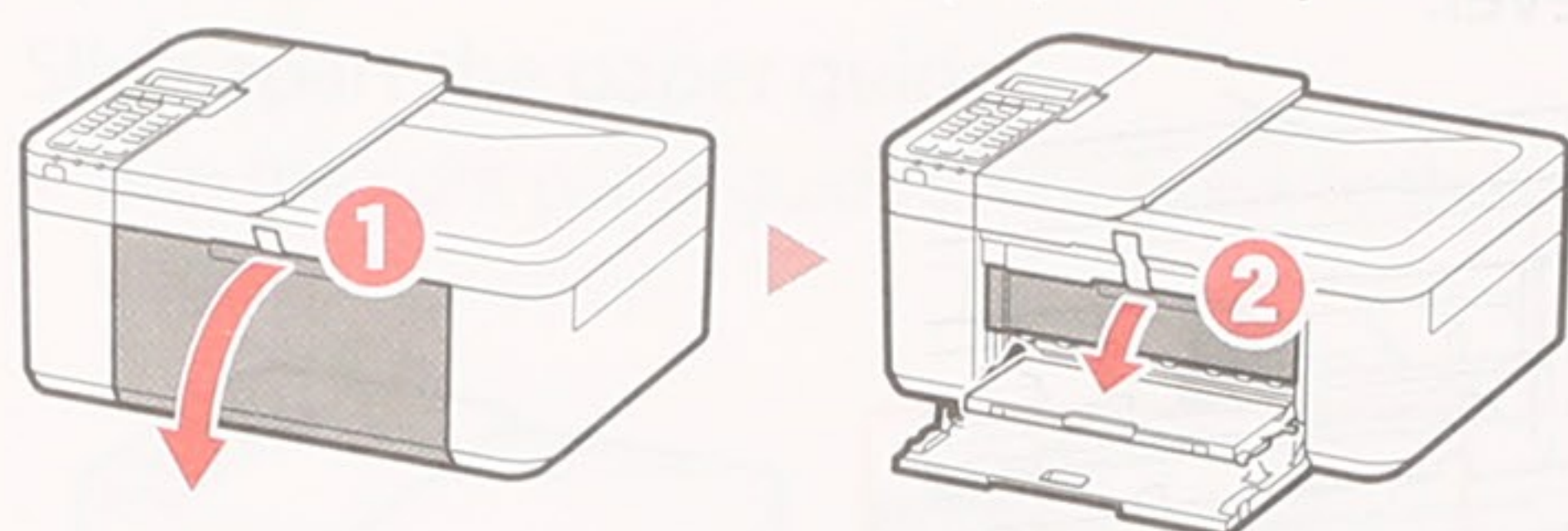
2. Removing Packing Materials



- 1 Remove and dispose of the packing materials from the device.

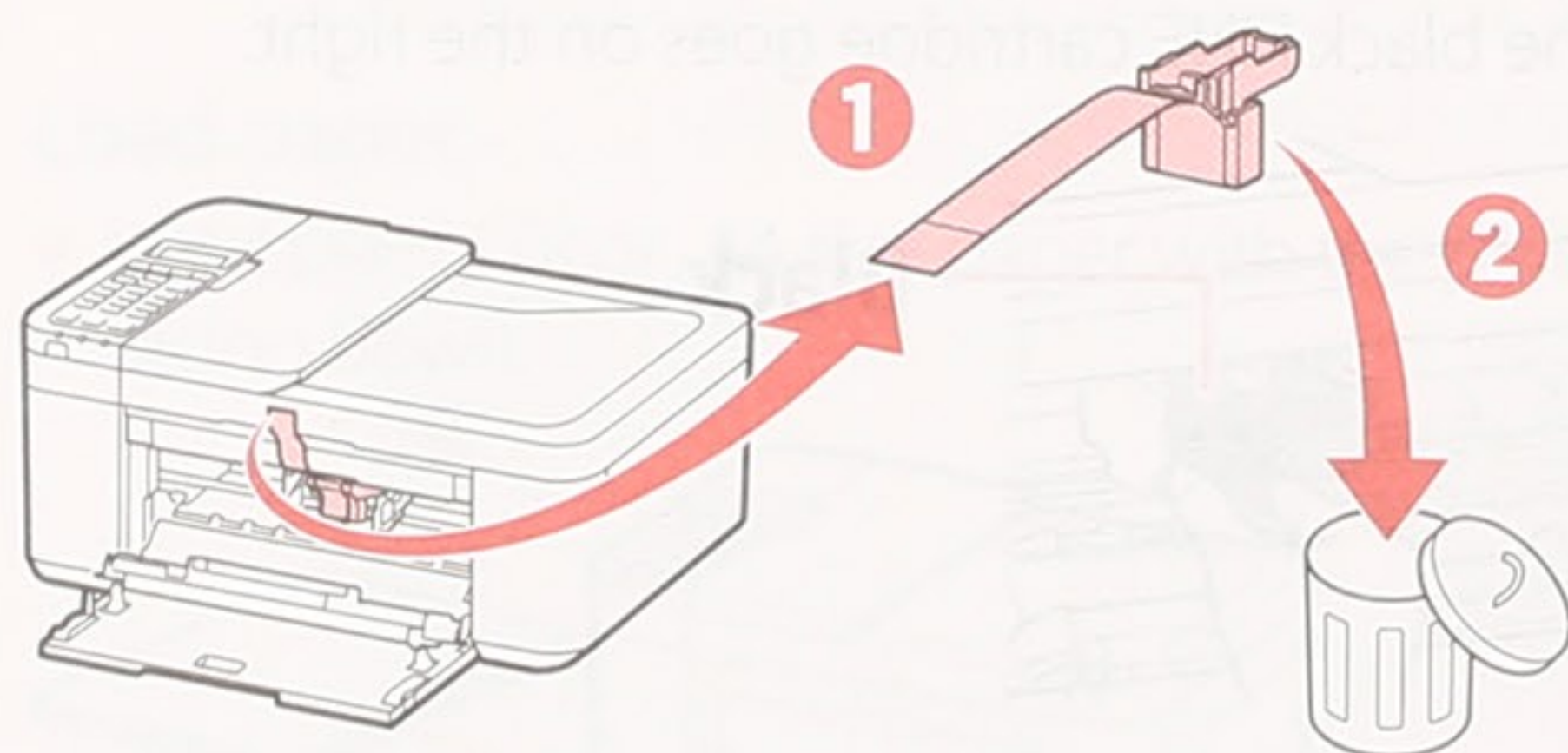
- Be sure to remove any orange tape.

- 2 Open the front cover and paper output cover.

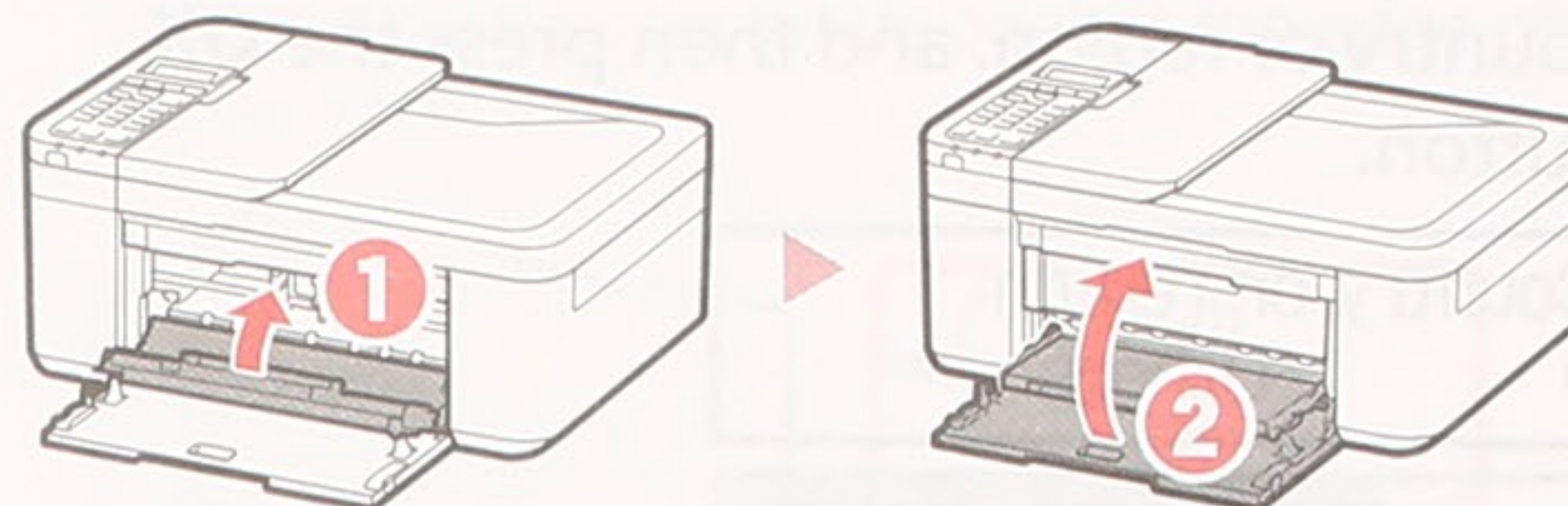


- 3 Remove and dispose of the protective materials.

- Pull the orange tape to remove the protective material.



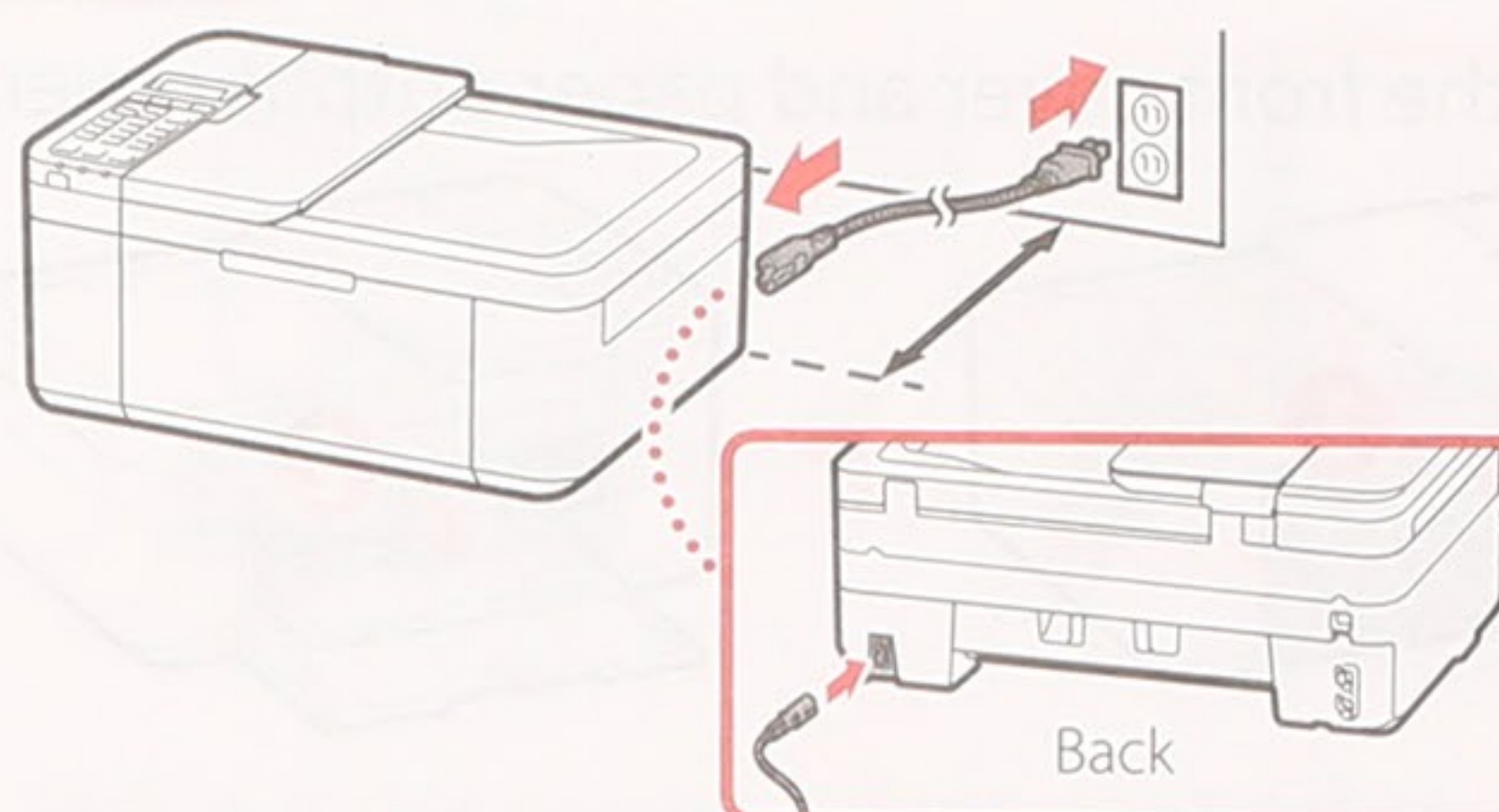
- 4 Close the paper output cover and front cover.



3. Turning on the Printer



- 1 Connect the power cord.



Important

- Place the printer so it is at least 5 cm away from the wall.
- At this time, do not connect any other cables.

- 2 Press the **ON** button.



Important

If the following screen appears, press the **ON** button to turn off the power, and redo the procedure from step 2 in "2. Removing Packing Materials".

Open the cover and 1890
Discard the material

- 3 When the following screen appears, use the ◀ and ▶ buttons to select a language, and then press the **OK** button.



Setting up the printer

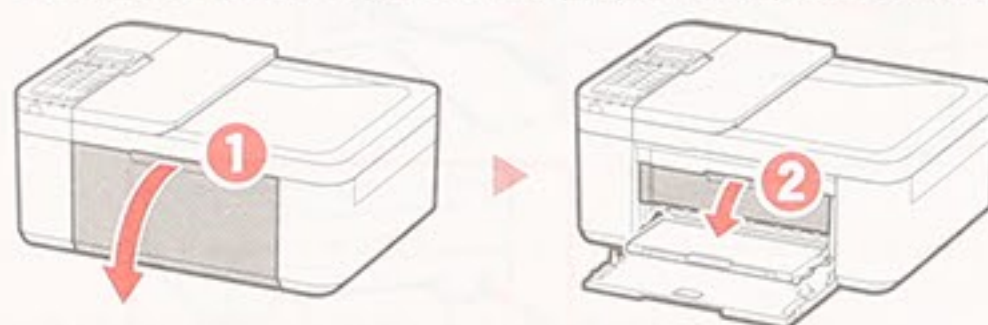
- 4 If the following screen appears, select your country or region, and then press the **OK** button.



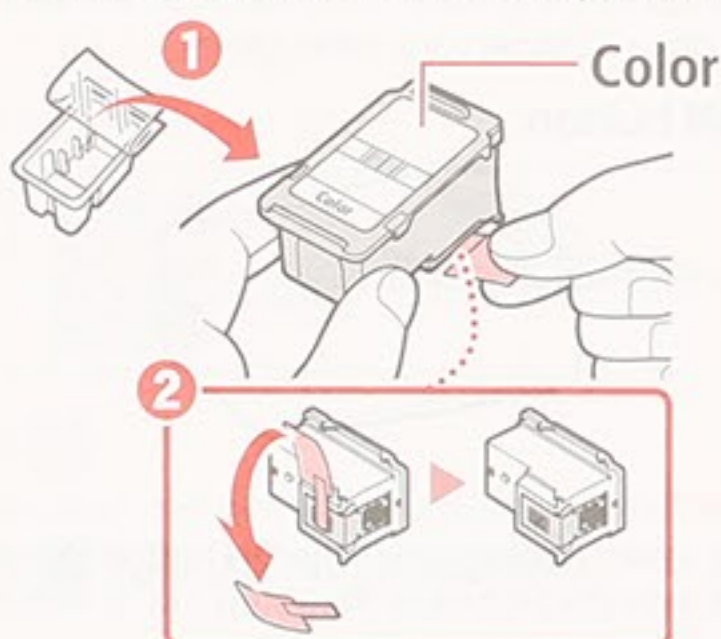
4. Installing the FINE Cartridges



- 1 Open the front cover and paper output cover.

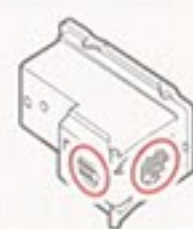


- 2 Remove the color FINE cartridge from the container and remove the protective tape.



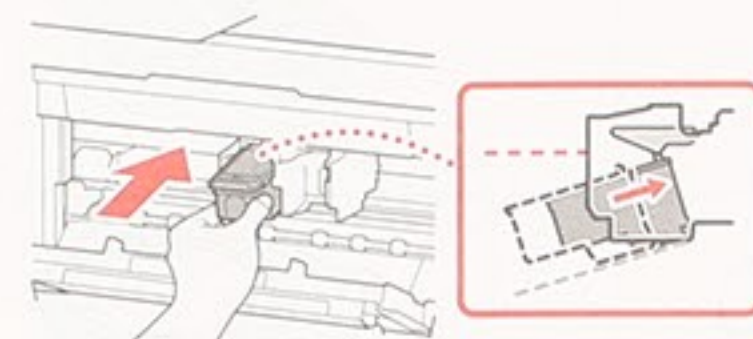
Important

- Do not touch the ink on the protective tape. It could stain your hands or surrounding objects.
- Do not touch the areas shown in the figure. Otherwise, the printer may not print correctly.

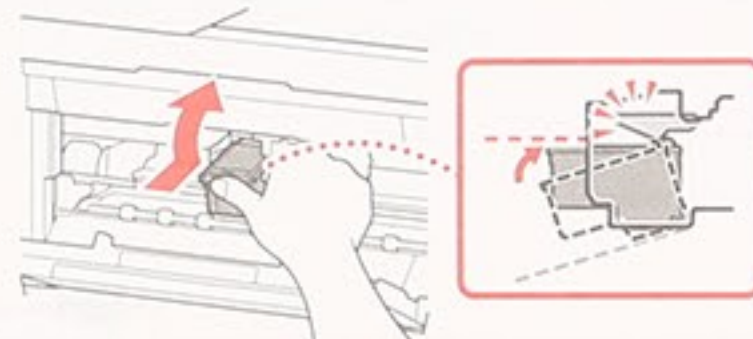


- 3 Install the color FINE cartridge.

- The color FINE cartridge goes on the left.
- Tilt the FINE cartridge upward at an angle and insert it into the FINE cartridge holder.



- Insert it all the way and press it upward until it clicks.

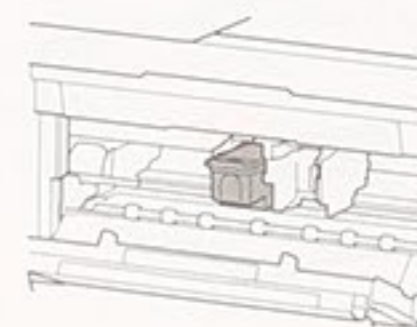


Important

- Do not bump the FINE cartridge. Doing so may cause a malfunction.

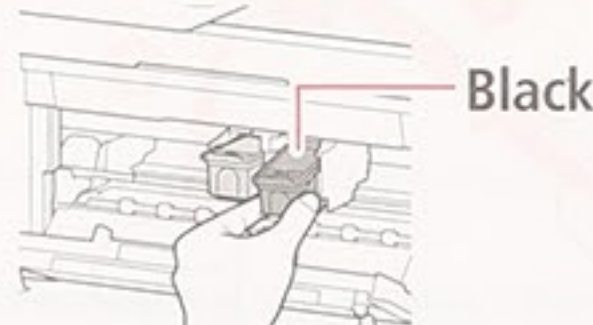


- 4 Confirm that the FINE cartridge is straight and level.



- 5 Repeat steps 2 to 4 to install the black FINE cartridge.

- The black FINE cartridge goes on the right.



- 6 Close the paper output cover.



Important

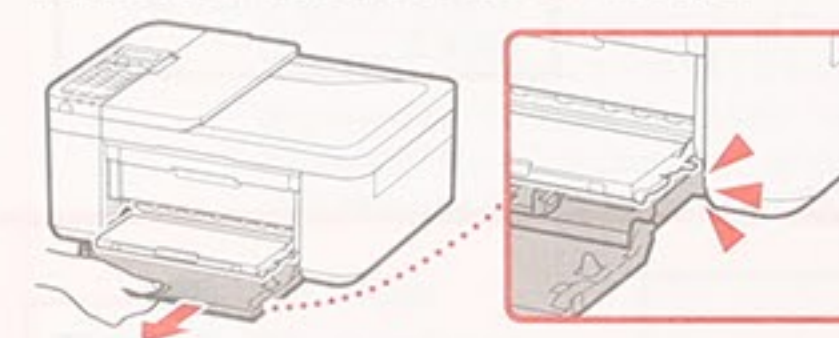
- If the following screen appears, return to step 3 in "4. Installing the FINE Cartridges" and confirm that the color and black FINE cartridges are positioned correctly.

Install the cartridges properly
168A

5. Loading Paper

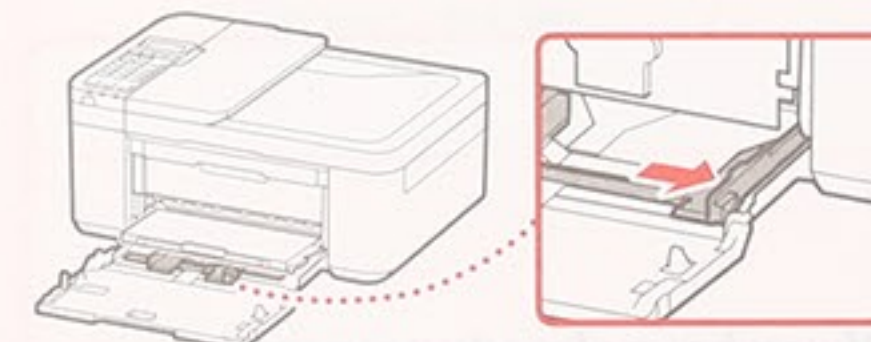


- 1 Pull out the cassette until it stops.



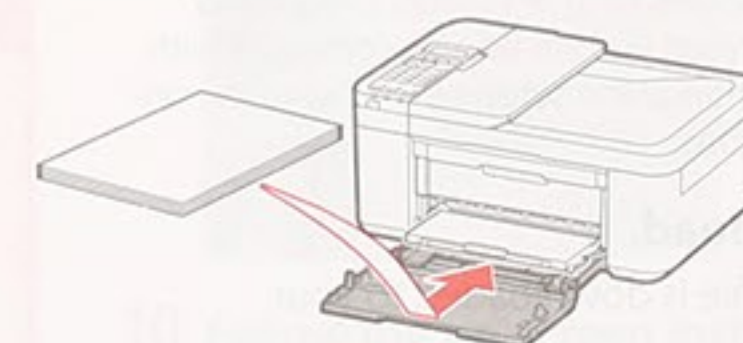
- 2 Slide apart the paper guides.

- Grip the right paper guide and move it to the right edge.

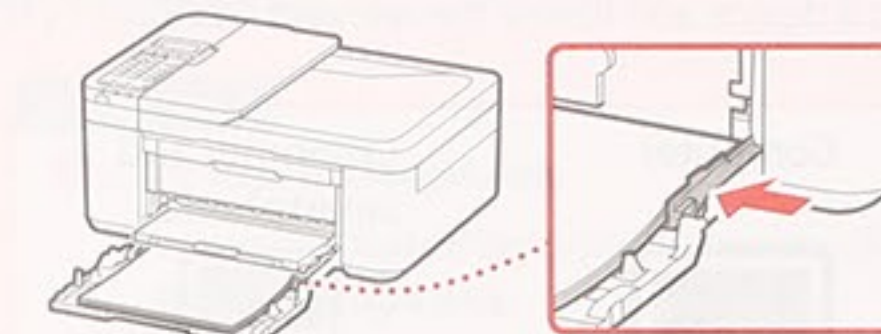


- 3 Load paper.

- Load plain LTR or A4 size paper with the print side facing down.

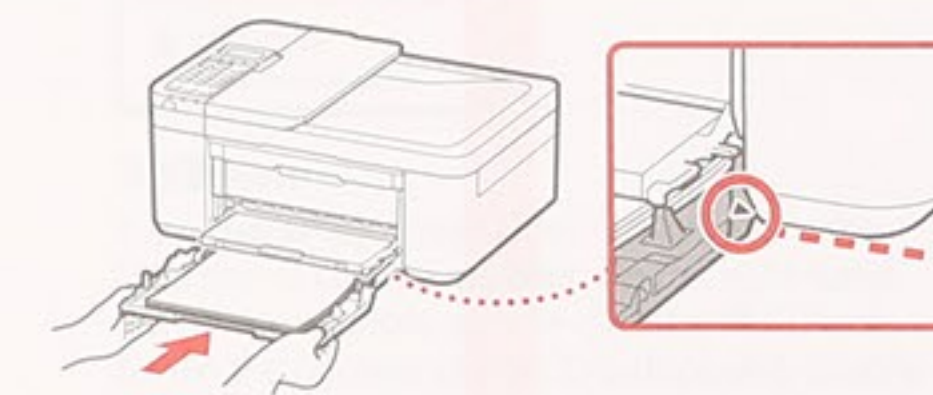


- Push the paper all the way into the cassette, and then slide the right paper guide against the edge of the paper stack.

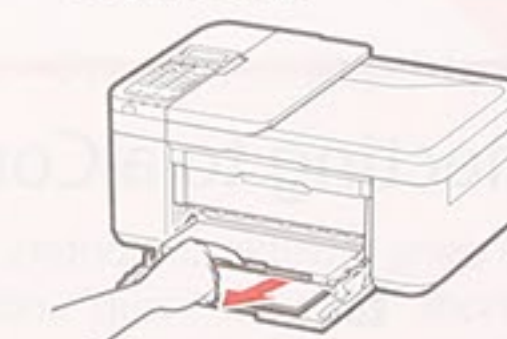


- 4 Push in the cassette.

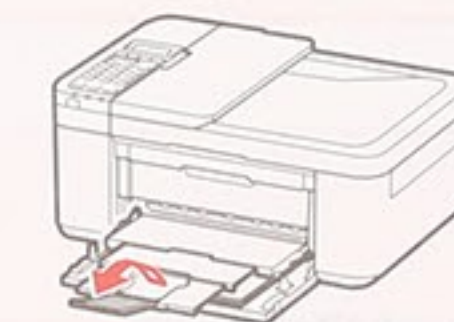
- The arrow (▶) on the front cover should align with the front edge of the printer.



- 5 Pull out the paper output support of the paper output tray.



- 6 Open the output tray extension.



- 7 Check that the following screen appears, and then press the **OK** button.

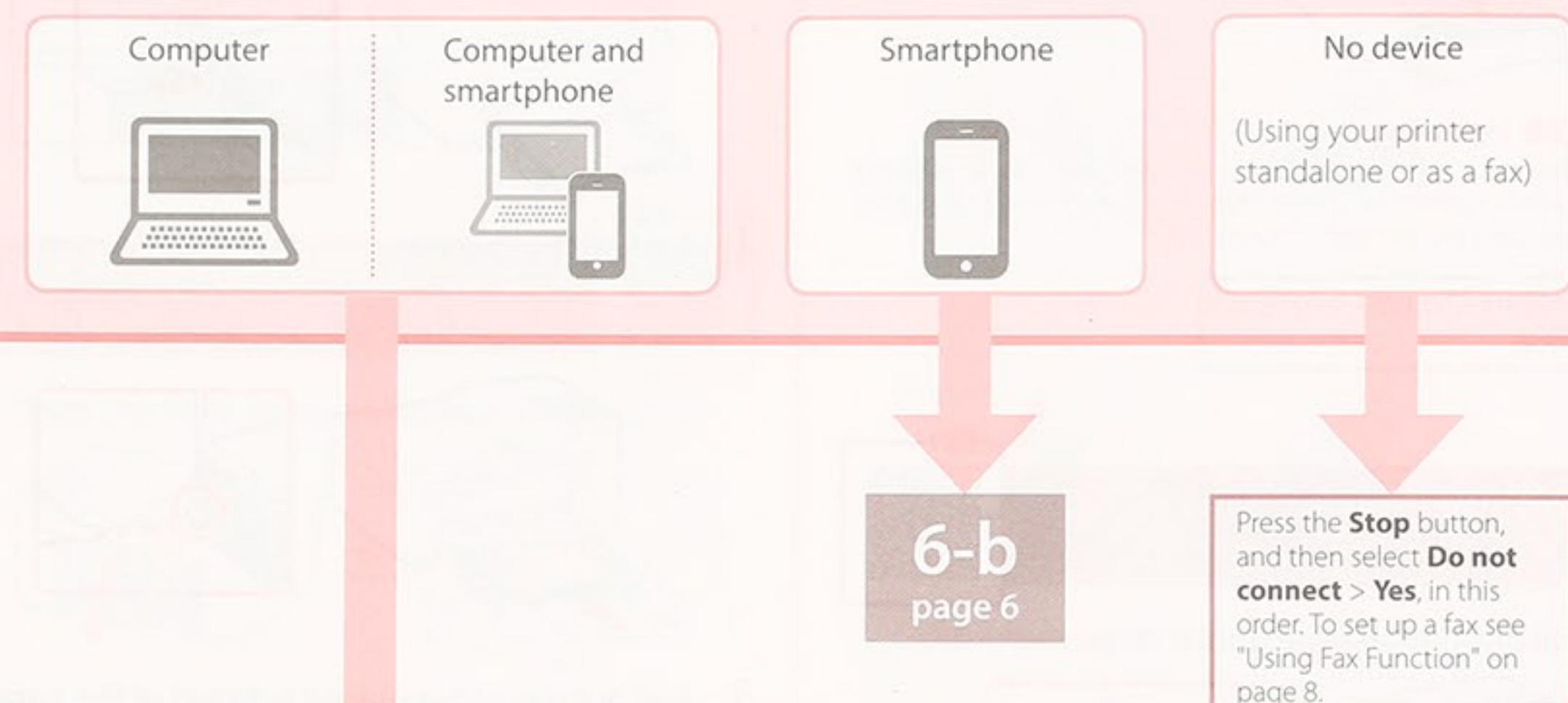
Prepare for connection
[OK]Next



Ready to connect
For details on how to connect

What device are you connecting?

Select a device and follow the relevant section.



6-a

Connecting to a Computer

If you are using multiple computers, perform these steps on each computer. There are two methods, "A Online Setup" and "B Using the Setup CD-ROM (Windows Only) Provided".



A Online Setup

- 1 Access the Canon website from a computer.
<http://ij.start.canon>
- 2 Select **Set Up**.
- 3 Enter your printer's model name and click **Go**.
- 4 Click **Start**.
- 5 Click **If you have already prepared your printer, go to Connect**.
Note
When you are using a computer with Windows (except for Windows 10 S) or macOS, proceed to the next step. When you are using a computer with another OS, continue the setup by following the on-screen instructions.
- 6 Click **Download**.
 - The setup file is downloaded to your computer.
- 7 Run the downloaded file.
- 8 Proceed to step 9 on page 5.

B Using the Setup CD-ROM (Windows Only) Provided

- 1 Insert the Setup CD-ROM into your computer.
- 2 Follow the instructions for your version of Windows.

Windows 10/Windows 8.1

- 1 Click on the following message when it appears on the right-hand side of your computer screen.



Note

If the message does not appear (or is no longer visible), click the **File Explorer** icon in the taskbar. On the left-hand side of the window, click **This PC**. Double click the CD icon that is displayed on the right-hand side (when the content of the CD is displayed, and then double click **Msetup4.exe**). Proceed to 3.

- 2 Click **Run Msetup4.exe**.

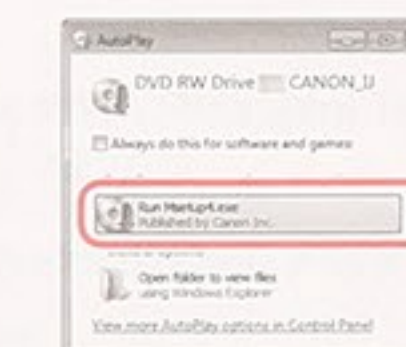


- 3 If the **User Account Control** dialog box appears, click **Yes**.

Windows 7

- 1 Click **Run Msetup4.exe**.

- When the **AutoPlay** screen appears, click **Run Msetup4.exe**.



Note

If the **AutoPlay** screen does not appear, in the Start menu, click **Computer**. On the right-hand side of the window, double click the CD icon (when the content of the CD is displayed, double click **Msetup4.exe**).

- 2 If the **User Account Control** dialog box appears, click **Continue**.

- 3 Proceed to step 9 below.

- 9 Click **Start Setup**.



- 10 Follow the on-screen instructions.
 - These operations may take some time.

- 11 When the following screen appears, click **Exit**.



- Your printer is now connected to your computer. To connect a smartphone as well, see "6-b. Connecting to a Smartphone" on page 6.
- To set up a fax, see "Using Fax Function" on page 8.

6-b

Connecting to a Smartphone

If you are using multiple smartphones, perform these steps on each smartphone.

Prepare the following before starting.

- 1 Enable the Wi-Fi setting on your smartphone*.
- 2 Connect your smartphone to the wireless router* (if you have a wireless router).

* See your smartphone and wireless router manuals regarding these procedures for more details.

- 1 Install the "Canon PRINT Inkjet/SELPHY" app on your smartphone.



iOS Search for "Canon PRINT" in the App Store.

Android Search for "Canon PRINT" in Google Play.

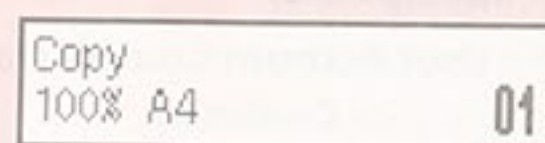
Note

You can also access the Canon website by scanning the QR code shown on the right to download the app.



- 2 Check the printer's screen as you proceed through the steps.

If the following screen appears

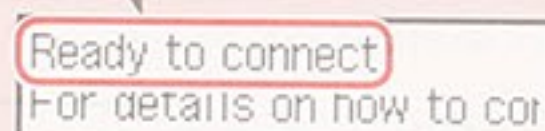
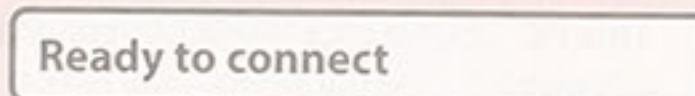


Press the **Setup** button  and check the screen that appears.



- If **Wi-Fi** appears, → **C**
- If **Wi-Fi** does not appear, → **E**

If the following screen appears → **D**



Note

- The printer's screen turns off when the printer is idle for 10 minutes. Press a button (except the **ON** button) on the operation panel to turn on the screen.
- If **Wi-Fi** appears, the printer cannot communicate by Wi-Fi connection. For details, see "Frequently Asked Questions" at "http://ij.start.canon".

C

- 3 Open the installed app.



- 4 Follow the on-screen instructions to add your printer.

- 5 Check that the following screen appears.



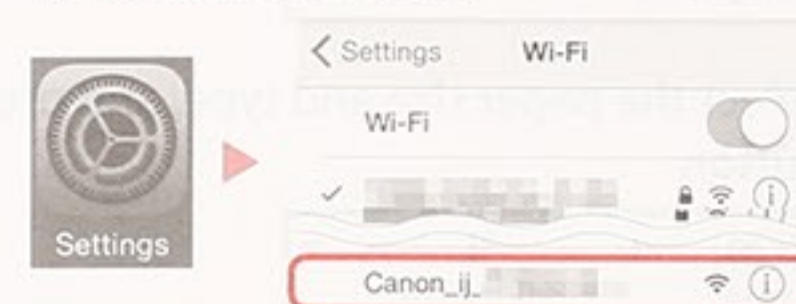
- Your printer is now connected to your smartphone. To print photos, see "Loading Photo Paper" on page 8.
- To set up a fax, see "Using Fax Function" on page 8.

D

Procedures vary for iOS and Android. Follow the instructions for your operating system.

iOS

- 3 Tap **Settings** on your smartphone's home screen, and tap **Canon_ij_XXXX** in the Wi-Fi settings.



Note

If **Canon_ij_XXXX** does not appear, follow the procedure in **E**, and then search for **Canon_ij_XXXX** again.

- 4 Open the installed app.

- The printer is registered with the most appropriate connection method for the environment you are using.



- 5 Check that the following screen appears.



- Your printer is now connected to your smartphone. To print photos, see "Loading Photo Paper" on page 8.
- To set up a fax, see "Using Fax Function" on page 8.

Android

- 3 Open the installed app.

- The printer is registered with the most appropriate connection method for the environment you are using.



Note

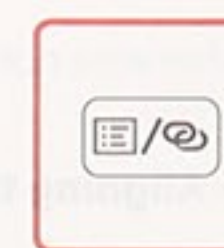
If a message saying "No printer has been added. Perform printer setup?" does not readily appear after starting the application, follow the procedure in **E**, and then return to smartphone operations.

- 4 Check that the following screen appears.



E

- 3 Press and hold the **Menu/Wireless connect** button for about 3 seconds.



- 4 When "Follow the instructions on the PC or smartphone, etc." appears on the printer's screen, proceed to **D**.

Loading Photo Paper

- 1 Pull out the cassette until it stops.
- 2 Slide apart the paper guides.
 - Grip the right paper guide and move it to the right edge.
- 3 Load photo paper.
 - Load photo paper in portrait orientation with the print side facing down, and place it in the center of the cassette.
 - Push the paper all the way into the cassette, and then slide the right paper guide against the edge of the paper stack.



- 4 Push in the cassette.
 - The arrow (▶) on the front cover should align with the front edge of the printer.
- 5 Pull out the paper output support of the paper output tray.
- 6 Open the output tray extension.
- 7 When the following screen appears, press the **OK** button.
- 8 Select the paper size and type, and press the **OK** button.

Register the cassette pa
[OK]Next

Size: ◀ *L ▶
Type: *Glossy

Using Fax Function

The fax function of your printer requires setup. Refer to either of the following manuals.

■ Online Manual

- 1 Access the Canon website.



<http://ij.start.canon>

- 2 Click
- 3 Enter your printer's model name and click **Go**.
- 4 Click **FAX Setup Guide**.

■ On-screen Manual (installed on your computer)

The following is an example using Windows 10.

- 1 Click the **Start** button.
- 2 Click **All apps** > **Canon TR4500 series On-screen Manual** in this order, and then open the **User's Manual**.
- 3 Click **FAX Setup Guide**.

If Print Results Are Unsatisfactory

Perform Print Head Alignment if straight lines are crooked or colors are inconsistent, or print results are otherwise not what you expected.

For details, click the **Maintenance** on the **Online Manual** and refer to **If Printing Is Faint or Uneven** > **Aligning the Print Head**.

Refer to the back cover for how to open the **Online Manual**.

■ Lines Are Misaligned



■ Uneven or Streaked Colors



Untuk info lebih lanjut hubungi:
Call Center: (021) 2922 6000

DATASCRIP

Jl. Selaparang Blok B-15 Kav.9 Kompleks Kemayoran Jakarta 10610

Tel : (62-21) 6544515

Fax : (62-21) 6544811-13

Email : info@datascrip.co.id

Website : www.canon.co.id

Pendaftaran Petunjuk Penggunaan dan Kartu Jaminan / Garansi dalam Bahasa Indonesia
No. : I.24.D4.01023.0418