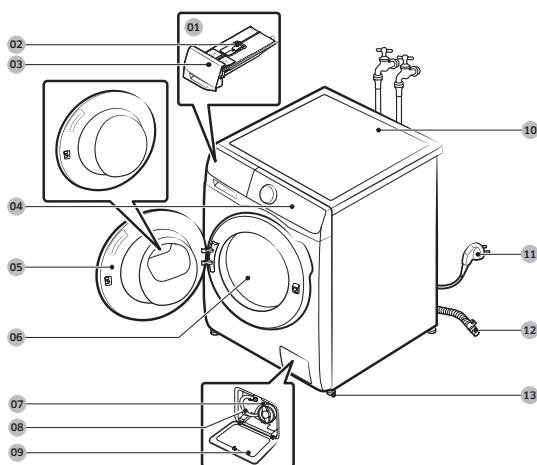


Washing Machine

Model: WW1*T***** / WW9*T***** / WW8*T***** / WW7*T*****

- Congratulations on your new Samsung washing machine. This manual contains important information on the installation, use, and care of your appliance. Read this manual thoroughly before using the washing machine to ensure that you know how to safely and efficiently operate the features and functions that your new washing machine offers.
- For detailed instructions on installation and cleaning of the washing machine, and ecodesign information (according to (EU)2019/2023), visit the Samsung website (<http://www.samsung.com>), go to Support > Support home, and then enter the model name. Or, download and install the SmartThings app on your mobile device, and then open **HomeCare Wizard** in SmartThings for tips and guides.
- To check the product's model name, see the label enclosed with the product or attached to the product.

What's included



- 01 Auto dispenser
- 02 Release lever
- 03 Detergent drawer
- 04 Control panel
- 05 Door
- 06 Drum
- 07 Debris filter
- 08 Emergency drain tube
- 09 Filter cover
- 10 Worktop
- 11 Power plug
- 12 Drain hose
- 13 Levelling feet



Spanner



Bolt caps



Hose guide



Cold water hose



Hot water hose

Accessories (not supplied)

- Stacking kit
 - SKK-DF (WW**T5*****, WW7*T*****, WW8*T6*****, WW8*T7*****, WW9*T6*****, WW9*T7***** Models only)
 - SK-DH (WW1*T*****, WW8GT6*****, WW8*T6*6***, WW8*T7*6***, WW**T8*****, WW**T9*****, WW9*T6*6*** Models only)
 - Staking kit is required to stack a dryer on a washing machine.

 NOTE

- Spanner: For removing the shipping bolts and levelling the washing machine.
- Bolt caps: For covering the holes after removing the shipping bolts. The provided number of bolt caps (3 to 6) depends on the model.
- Hose guide: For hanging the drain hose in the drainpipe or wash-basin.
- Cold/Hot water hose: For supplying water to the washing machine. (Hot water hoses is for applicable models only.)

Safety information

Important safety symbols

What the icons and signs in this user manual mean:

 WARNING

Hazards or unsafe practices that may result in severe personal injury, death and/or property damage.

 CAUTION

Hazards or unsafe practices that may result in personal injury and/or property damage.

 NOTE

Indicates that a risk of personal injury or material damage exists.

These warning signs are here to prevent injury to yourself and others.

Please follow them explicitly.

After reading this manual, store it in a safe place for future reference.

Read all instructions before using the appliance.

As with any equipment that uses electricity and moving parts, potential hazards exist. To safely operate this appliance, familiarize yourself with its operation and exercise care when using it.

Important safety precautions

 WARNING

To reduce the risk of fire, electric shock, or injury to persons when using your appliance, follow basic precautions, including the following:

1. This appliance is not to be used by persons (including children) with reduced physical, sensory or mental capabilities, or lack of experience and knowledge, unless they have been given supervision or instruction concerning use of the appliance by a person responsible for their safety.

2. **For use in Europe:** This appliance can be used by children aged from 8 years and above and persons with reduced physical, sensory or mental capabilities or lack of experience and knowledge if they have been given supervision or instruction concerning use of the appliance in a safe way and understand the hazards involved. Children shall not play with the appliance. Cleaning and user maintenance shall not be made by children without supervision.
3. Children should be supervised to ensure that they do not play with the appliance.
4. **For use in Europe:** Children of less than 3 years should be kept away unless continuously supervised.
5. If the supply cord is damaged, it must be replaced by the manufacturer, its service agent or similarly qualified persons in order to avoid a hazard.
6. The new hose-sets supplied with the appliance are to be used and old hose-sets should not be reused.
7. For appliances with ventilation openings in the base, a carpet must not obstruct the openings.
8. **CAUTION:** In order to avoid a hazard due to inadvertent resetting of the thermal cut-out, this appliance must not be supplied through an external switching device, such as a timer, or connected to a circuit that is regularly switched on and off by the utility.
9. This appliance is intended to be used in household only and it is not intended to be used such as:
 - staff kitchen areas in shops, offices and other working environments;
 - farm houses;

- by clients in hotels, motels and other residential type environments;
- bed and breakfast type environments; areas for communal use in blocks of flats or in launderettes.

Critical installation warnings

WARNING

The installation of this appliance must be performed by a qualified technician or service company.

- Failure to do so may result in electric shock, fire, an explosion, problems with the appliance, or injury.

The appliance is heavy, therefore take care when lifting it.

Plug the power cord firmly into a wall socket that meets local electrical specifications. Use the socket for this appliance only, and do not use an extension cord.

- Sharing a wall socket with other appliances using a power strip or extending the power cord may result in electric shock or fire.
- Ensure that the power voltage, frequency, and current are the same as those of the product specifications. Failure to do so may result in electric shock or fire.

Remove all foreign substances such as dust or water from the power plug terminals and contact points using a dry cloth on a regular basis.

- Unplug the power plug and clean it with a dry cloth.
- Failure to do so may result in electric shock or fire.

Plug the power plug into the wall socket so that the cord is running towards the floor.

- If you plug the power plug into the socket in the opposite direction, the electric wires within the cable may be damaged and this may result in electric shock or fire.

Keep all packaging materials out of the reach of children as these may be dangerous.

- If a child places a bag over its head, it may suffocate.

When the appliance, power plug or power cord is damaged, contact your nearest service centre.

This appliance must be properly grounded.

Do not ground the appliance to a gas pipe, plastic water pipe, or telephone line.

- This may result in electric shock, fire, an explosion, or problems with the appliance.
- Never plug the power cord into a socket that is not grounded correctly and make sure that it is in accordance with local and national regulations.

Do not install this appliance near a heater or any inflammable material.

Do not install this appliance in a humid, oily or dusty location, or in a location exposed to direct sunlight or water (rain drops).

Do not install this appliance in a location exposed to low temperatures.

- Frost may cause the tubes to burst.

Do not install this appliance in a location where gas may leak.

- This may result in electric shock or fire.

Do not use an electric transformer.

- This may result in electric shock or fire.

Do not use a damaged power plug, damaged power cord, or loose wall socket.

- This may result in electric shock or fire.

Do not pull or excessively bend the power cord.

Do not twist or tie the power cord.

Do not hook the power cord over a metal object, place a heavy object on the power cord, insert the power cord between objects, or push the power cord into the space behind the appliance.

- This may result in electric shock or fire.

Do not pull the power cord when unplugging the power plug.

- Unplug the power plug by holding the plug.
- Failure to do so may result in electric shock or fire.

This appliance should be positioned so that the power plug, the water supply taps, and the drain pipes are accessible.

Following the repair by a non-authorized service provider, self-repair or non-professional repair of the product, Samsung is not liable for any damage to the product, any injury or any other product safety issue caused by any attempt to repair the product which does not carefully follow these repair and maintenance instructions. Any damage to the product caused by an attempt to repair the product by any person other than a Samsung certified service provider will not be covered by the warranty.

Installation cautions

CAUTION

This appliance should be positioned in such a way that the power plug is easily accessible.

- Failure to do so may result in electric shock or fire due to electric leakage.

Install your appliance on a solid, level floor that can support its weight.

- Failure to do so may result in abnormal vibrations, movement, noise, or problems with the appliance.

Critical usage warnings

WARNING

If the appliance is flooded, turn off the water & power supplies immediately and contact your nearest service centre.

- Do not touch the power plug with wet hands.
- Failure to do so may result in electric shock.

If the appliance generates a strange noise, a burning smell, or smoke, unplug the power cord immediately and contact your nearest service centre.

- Failure to do so may result in electric shock or fire.

In the event of a gas leak (such as propane gas, LP gas, etc.), ventilate immediately without touching the power plug. Do not touch the appliance or power cord.

- Do not use a ventilating fan.
- A spark may result in an explosion or fire.

Remove the washing machine door lever before disposing the appliance.

- If trapped inside the appliance, children may suffocate to death.

Make sure to remove the packaging (sponge, styrofoam) attached to the bottom of the washing machine before using it.

Do not wash items contaminated with gasoline, kerosene, benzene, paint thinner, alcohol or other inflammable or explosive substances.

- This may result in electric shock, fire, or an explosion.

Do not open the washing machine door by force while it is operating (high-temperature washing/drying/spinning).

- Water flowing out of the washing machine may result in burns or cause the floor to be slippery. This may result in injury.
- Opening the door by force may result in damage to the appliance or injury.

Do not touch the power plug with wet hands.

- This may result in electric shock.

Do not turn the appliance off by unplugging the power cord while an operation is in progress.

- Plugging the power cord into the wall socket again may cause a spark and result in electric shock or fire.

Do not let children climb in or onto the appliance.

- This may result in electric shock, burns or injury.

Do not insert your hand or a metal object under the washing machine while it is operating.

- This may result in injury.

Do not unplug the appliance by pulling the power cord. Always grip the plug firmly and pull it straight out of the outlet.

- Damage to the power cord may cause a short-circuit, fire and/or electric shock.

Do not attempt to repair, disassemble, or modify the appliance yourself.

- Do not use a fuse (such as copper, steel wire, etc.) other than a standard fuse.
- When the appliance needs to be repaired or reinstalled, contact your nearest service centre.
- Failure to do so may result in electric shock, fire, problems with the appliance, or injury.

If the water supply hose comes loose from the water tap and floods the appliance, unplug the power cord.

- Failure to do so may result in electric shock or fire.

Unplug the power cord when the appliance is not being used for long periods of time or during a thunder or lightning storm.

- Failure to do so may result in electric shock or fire.

If any foreign substance enters into the appliance, unplug the power cord and contact your nearest Samsung Customer Service.

- This may result in electric shock or fire.

Do not let children (or pets) play in or on your washing machine. The washing machine door does not open easily from the inside and children may be seriously injured if trapped inside.

Usage cautions

CAUTION

When the washing machine is contaminated by a foreign substance such as detergent, dirt, food waste, etc., unplug the power cord and clean the washing machine using a damp, soft cloth.

- Failure to do so may result in discolouration, deformation, damage, or rust.

The front glass may be broken by a strong impact. Take care when using the washing machine.

- If the glass is broken, it may result in injury.

Open the water tap slowly after a long period of non-use, water supply failure, or when reconnecting the water supply hose.

- The air pressure in the water supply hose or the water pipe may damage a part of the appliance or result in a water leak.

If a draining error occurs during an operation, check if there is a draining problem.

- If the washing machine is used when it is flooded because of a draining problem, it may result in electric shock or fire.

Insert the laundry into the washing machine completely so that the laundry does not get caught in the door.

- If laundry gets caught in the door, it may result in damage to the laundry or the washing machine, or result in a water leak.

Turn the water supply off when the washing machine is not being used.

- Ensure that the screws on the water supply hose connector are properly tightened.

Ensure that the rubber seal and front door glass are not contaminated by a foreign substance (e.g. waste, thread, hair, etc.).

- If a foreign substance is caught in the door or the door is not completely closed, it may cause a water leak.

Open the water tap and check if the water supply hose connector is firmly tightened and that there is no water leak before using the appliance.

- If the screws on the water supply hose connector are loose, it may result in a water leak.

The appliance you have purchased is designed for domestic use only.

Using the appliance for business purposes qualifies as an appliance misuse. In this case, the appliance will not be covered by the standard warranty provided by Samsung and no responsibility can be attributed to Samsung for malfunctions or damages resulting from such misuse.

Do not stand on the appliance or place objects (such as laundry, lighted candles, lighted cigarettes, dishes, chemicals, metal objects, etc.) on the appliance.

- This may result in electric shock, fire, problems with the appliance, or injury.

Do not spray volatile material such as insecticide onto the surface of the appliance.

- As well as being harmful to humans, this may result in electric shock, fire or problems with the appliance.

Do not place objects that generate electromagnetic fields near the washing machine.

- This may result in injury due to a malfunction.

Water drained during a high-temperature wash or drying cycle is hot. Do not touch the water.

- This may result in burns or injury.

Draining time may vary depending on the water temperature. If the water temperature is too high, the draining process starts after the water cools down.

Do not wash, spin, or dry water-proof seats, mats, or clothing (*) unless your appliance has a special cycle for washing these items.

(*): Woollen bedding, rain covers, fishing vests, ski pants, sleeping bags, diaper covers, sweat suits, and bicycle, motor cycle and car covers, etc.

- Do not wash thick or hard mats even if the washing machine mark is on the care label. This may result in injury or damage to the washing machine, walls, floor, or clothing due to abnormal vibrations.
- Do not wash throw rugs or doormats with rubber backing. The rubber backing may come off and stick to inside the drum, and this may result in malfunction such as a drainage error.

Do not operate the washing machine when the detergent drawer is removed.

- This may result in electric shock or injury due to a water leak.

Do not touch the insides of the drum during or just after drying as it is hot.

- This may result in burns.

The door glass becomes hot during washing and drying. Therefore, do not touch the door glass.

Also, do not allow children to play around the washing machine or touch the door glass.

- This may result in burns.

Do not insert your hand into the detergent drawer.

- This may result in injury as your hand may be caught by the detergent input device.

Remove the liquid detergent guide (applicable models only) when using powdered detergent.

- If not, water may leak through the front of the detergent drawer.

Do not place any objects (such as shoes, food waste, animals) other than laundry into the washing machine.

- This may result in damage to the washing machine, or injury and death in the case of pets due to the abnormal vibrations.

Do not press the buttons using sharp objects such as pins, knives, fingernails, etc.

- This may result in electric shock or injury.

Do not wash laundry contaminated by oils, creams or lotions usually found in skincare shops or massage clinics.

- This may cause the rubber seal to become deformed and result in a water leak.

Do not leave metal objects such as safety pins, hair pins or bleach in the drum for long periods of time.

- This may cause the drum to rust.
- If rust starts appearing on the surface of the drum, apply a (neutral) cleansing agent to the surface and use a sponge to clean it. Never use a metal brush.

Do not use dry cleaning detergent directly and do not wash, rinse, or spin laundry contaminated by dry cleaning detergent.

- This may result in spontaneous combustion or ignition due to the heat from the oxidation of the oil.

Do not use water from water cooling/heating devices.

- This may result in problems with the washing machine.

Do not use natural hand-washing soap for the washing machine.

- If it hardens and accumulates inside the washing machine, it may result in problems with the appliance, discolouration, rust, or bad odours.

Place socks and brassieres in a washing net and wash them with the other laundry.

Do not wash large laundry items such as bedding in the washing net.

- Failure to do so may result in injury due to abnormal vibrations.

Do not use hardened detergent.

- If it accumulates inside the washing machine, it may result in a water leak.

Make sure that the pockets of all the clothing items to be washed are empty.

- Hard, sharp objects such as coins, safety pins, nails, screws, or stones can cause extensive damage to the appliance.

Do not wash clothing with large buckles, buttons or other heavy metal objects.

Sort the laundry by colour on the basis of its colorfastness and select the recommended cycle, water temperature and additional functions.

- This may result in discolouration or fabric damage.

Take care that children's fingers are not caught in the door when you close it.

- Failure to do so may result in injury.

To prevent odours and mould, leave the door open after a wash cycle to allow the drum to dry.

To prevent limescale build up, leave the detergent drawer open after a wash cycle and dry inside it.

Critical cleaning warnings

WARNING

Do not clean the appliance by spraying water directly onto it.

Do not use a strong acidic cleaning agent.

Do not use benzene, thinner or alcohol to clean the appliance.

- This may result in discolouration, deformation, damage, electric shock or fire.

Before cleaning or performing maintenance, unplug the appliance from the wall socket.

- Failure to do so may result in electric shock or fire.

Instructions about the WEEE



Correct Disposal of This Product (Waste Electrical & Electronic Equipment)

(Applicable in countries with separate collection systems)

This marking on the product, accessories or literature indicates that the product and its electronic accessories (e.g. charger, headset, USB cable) should not be disposed of with other household waste at the end of their working life. To prevent possible harm to the environment or human health from uncontrolled waste disposal, please separate these items from other types of waste and recycle them responsibly to promote the sustainable reuse of material resources.

Household users should contact either the retailer where they purchased this product, or their local government office, for details of where and how they can take these items for environmentally safe recycling.

Business users should contact their supplier and check the terms and conditions of the purchase contract. This product and its electronic accessories should not be mixed with other commercial wastes for disposal.

For information on Samsung's environmental commitments and product regulatory obligations, e.g. REACH, WEEE or Batteries, visit our sustainability page available via www.samsung.com




Declaration of conformity

Hereby, Samsung declares that this radio equipment is in compliance with Directive 2014/53/EU and with the relevant statutory requirements in the UK. The full text of the EU declaration of conformity and the UK declaration of conformity is available at the following internet address: The official Declaration of conformity may be found at <http://www.samsung.com>, go to Support > Support home and enter the model name.



Wi-Fi max transmitter power : 20 dBm at 2.412 GHz – 2.472 GHz

Turning on Wi-Fi (for network models only)

Turning on Wi-Fi consumes more energy. Under an environment where Wi-Fi is frequently turned on, actual energy consumption can be greater than the values in the specification sheet section.

1. Tap and hold  to turn on the washing machine.
2. Tap and hold 
 - 2-1. The washing machine enters AP mode and connects to your smartphone.
 - 2-2. Tap  to authenticate your washing machine.
 - 2-3. Once the authentication process is complete, your washing machine is successfully connected to the app.

NOTE

Tap and hold  for 3 seconds to enter the **System Functions** menu, turn the Navigation dial to select Wi-Fi, and tap  to turn it off.

Installation

Follow these instructions carefully to ensure proper installation of the washing machine and prevent accidents when doing laundry.

Installation requirements

Electrical supply and grounding

Use an individual branch circuit specific to the washing machine.

To ensure proper grounding, the washing machine comes with a power cord featuring a three-prong grounding plug for use in a properly installed and grounded outlet.

Check with a qualified electrician or service person if you are not sure about the grounding.

Do not modify the provided plug. If it does not fit the outlet, call a qualified electrician to install a suitable outlet.

WARNING

- Do NOT use an extension cord.
- Use only the power cord that comes with the washing machine.
- Do NOT connect the ground wire to plastic plumbing, gas lines, or hot water pipes.
- Improperly connected grounding conductors may cause electric shock.

Water supply

The proper water pressure for this washing machine is between 50 kPa and 800 kPa. Water pressure less than 50 kPa may cause the water valve to not close completely, or it may take longer to fill the drum, causing the washing machine to turn off. Water taps must be within 120 cm from the rear of the washing machine so that the provided inlet hoses reach the washing machine.

To reduce the risk of leaks:

- Make sure water taps are easily accessible.
- Turn off the taps when the washing machine is not in use.
- Check for any leaks at the water inlet hose fittings on a regular basis.

CAUTION

Before using the washing machine for the first time, check all connections at the water valve and taps for any leaks.

Drain

Samsung recommends a standpipe 60-90 cm high. The drain hose must be connected through the hose clip to the standpipe, and the standpipe must fully cover the drain hose.



Flooring

For best performance, the washing machine must be installed on a solid floor. Wood floors may need to be reinforced to minimise vibration and/or unbalanced loads. Carpeting and soft tile surfaces do not resist vibrations well and may cause the washing machine to move slightly during the spin cycle.



CAUTION

Do NOT install the washing machine on a platform or a poorly supported structure.

Water temperature

Do not install the washing machine in areas where water may freeze as the washing machine always retains some water in its water valves, pumps, and/or hoses. Frozen water left in the connection parts may cause damage to belts, the pump, and other components of the washing machine.

Alcove installation

Minimum clearance for stable operation:

- Sides: 25 mm, Top: 25 mm, Rear: 50 mm, Front: 550 mm

If both the washing machine and a dryer are installed in the same location, the front of the alcove must have at least a 550 mm unobstructed air opening. Your washing machine alone does not require a specific air opening.

Step-by-step installation

STEP 1 Select a location

Location requirements:

- Solid, level surface without carpeting or flooring that may obstruct ventilation
- Away from direct sunlight
- Adequate room for ventilation and wiring
- The ambient temperature is always higher than the freezing point (0 °C)
- Away from a heat source

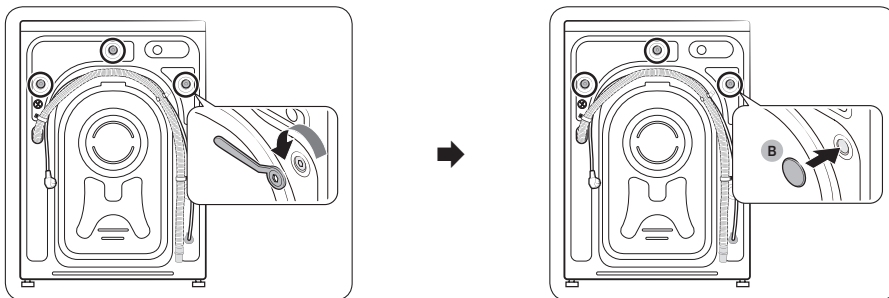


NOTE

- To prevent excessive vibration while operating the washing machine, consider stability before anything else.
- Install your washing machine on a solid and level floor.
- Do not install your washing machine on soft floors or floor coverings.
- If you install your washing machine on a wood floor, install a water-resistance wooden panel (min 1.18 in. / 30 mm thick) to the floor. Also, we recommend installing your washing machine on the corner of the wood floor.



STEP 2 Remove the shipping bolts



1. Unpack the product package and remove all shipping bolts.
2. Insert the **bolt caps (B)** into the holes (marked with circles in the figure).

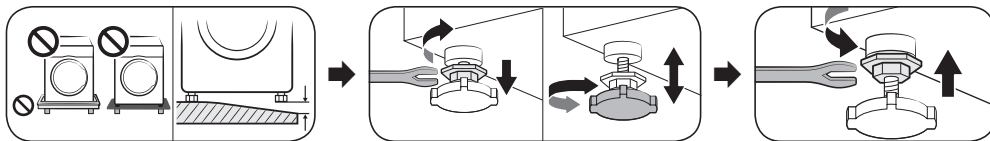
NOTE

The number of shipping bolts may differ depending on the model.

WARNING

- To avoid injury, cover the holes with bolt caps after removing the shipping bolts. Do not move the washing machine without the shipping bolts in place. Assemble the shipping bolts before moving the washing machine to another location. Keep the shipping bolts in a safe place for future use.
- Packaging materials can be dangerous to children. Dispose all packaging material (plastic bags, polystyrene, etc.) out of children's reach.

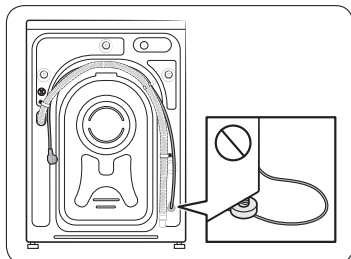
STEP 3 Adjust the levelling feet



Adjust the levelling feet to level the washing machine. Once the washing machine is level, tighten the nuts with a spanner.

CAUTION

Make sure all the levelling feet are seating on the floor surface to avoid the washing machine from moving or generating noise due to vibration. Then, check if the washing machine is rocking. If the washing machine is not rocking, tighten the nuts.



CAUTION

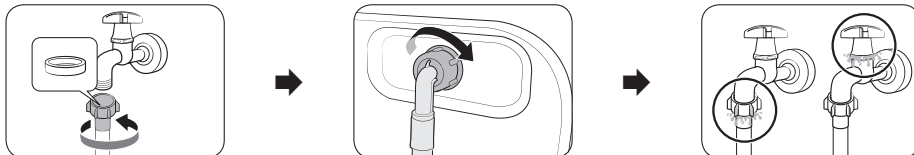
When installing the product make sure the levelling feet is not pressing the power cord.



STEP 4 Connect the water hose

NOTE

These instructions are for the threaded water tap. For more detailed instructions or instructions for connecting the water hose to a non-threaded water tap, please visit the website on the cover of this manual and check the web manual.



1. Connect the water hose to the water tap, and then turn it to the right to tighten.

CAUTION

Before connecting the water hose, make sure there is a rubber washer in the hose connector. Do not use the hose if the washer is damaged or missing.

2. Connect the other end of the water hose to the inlet valve on the back of the washing machine, and then turn it to the right to tighten.
3. Slowly open the water tap and check if there are any leaks around the connection areas. If there are water leaks, repeat step 1 and 2.

WARNING

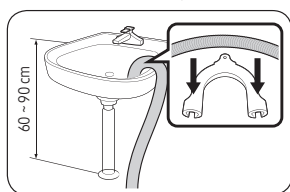
If there is a water leak, stop operating the washing machine and disconnect it from the electrical supply. Then, contact a local Samsung service centre in case of a leak from the water hose, or contact a plumbing technician in case of a leak from the water tap. Otherwise, this may cause electric shock.

CAUTION

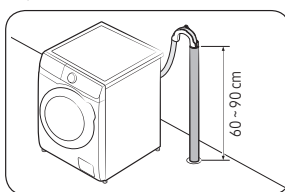
Do not stretch the water hose by force. If the hose is too short, replace the hose with a longer, high-pressure hose.

STEP 5 Position the drain hose

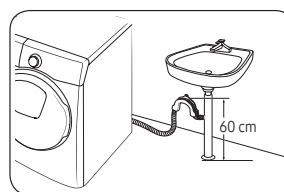
The drain hose can be positioned in three ways:



Over the edge of a wash basin



In a drain pipe

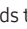


In a sink drain pipe branch

CAUTION

Remove the lid on the sink drain pipe branch before connecting the drain pipe to it.

STEP 6 Power on

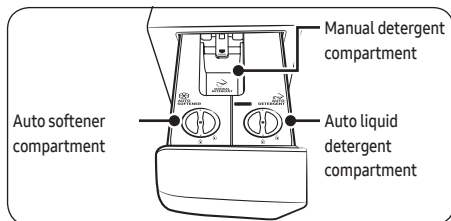
Plug the power cord into a wall socket protected by a fuse or circuit breaker. Then, tap and hold  for 3 seconds to turn on the washing machine.



Run Calibration

- Initial setup includes the calibration process which comes after the language selection. You must proceed calibration before using the washing machine.
- Empty the drum, and then tap **▶||** to start calibration.
- When calibration is complete, power turns off and then turns on automatically.
- If you want to proceed calibration again, tap and hold **▶||** to enter the system function and select **Calibration**.

Auto dispenser



⚠ CAUTION

- Make sure to empty the detergent drawer before moving the washing machine.
- Do not add detergent to the drawer without the detergent and softener compartment.
- The washing machine stops operating if you open the detergent drawer while water is being supplied.

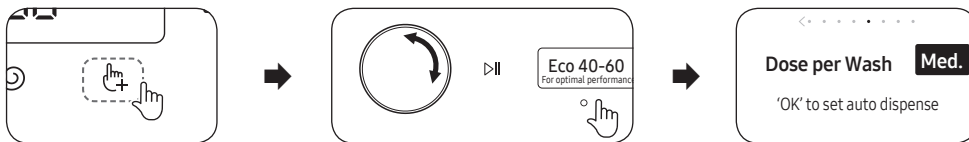
📖 NOTE


- The “Detergent drawer is open” message appears if the detergent drawer is not completely closed. Close the detergent drawer before you start the washing machine.
- If message “Refill detergent”, “Refill softener”, or “Refill detergent & softener” appears on the display, refill the corresponding compartment.
- Detergent/softener is not automatically dispensed in the Wool cycle. To dispense detergent/softener in the Wool cycle, you must manually set the input level of detergent/softener.
- Do not exceed the max line when filling detergent and softener.
- It may be hard to open the detergent drawer with just your fingertips. Grab the detergent drawer handle firmly with your hand and pull to open it.
- Push the detergent drawer all the way to the end to close it. You will hear a click sound when the drawer is properly closed.
- Keep the door open so that inside the drum and detergent drawer can be well ventilated.
- Always keep the detergent drawer and the auto detergent/softener compartment covers closed except when adding detergent and/or softener. Air can enter all the way inside and can dry out the detergent and/or softener.
- Some detergent may leak from the detergent drawer while removing the drawer from the washing machine. This is normal.



Setting the amount of detergent/softener input

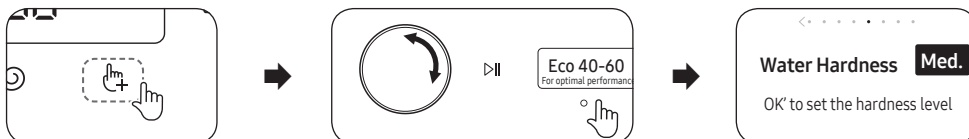
Follow these instructions to increase or decrease the amount of detergent/softener dispensed automatically.




1. Tap .
2. Turn the Navigation dial to select **Dose Per Wash** or **Dose Per Rinse**.
 - **Dose Per Wash:** You can select the amount of detergent to input.
 - **Dose Per Rinse:** You can select the amount of softener to input.
3. Tap **O** to change the setting.
 - Default setting is **Med. (Medium)**.
 - You can select from **Med., High, Off, or Low**.

Installation

Setting the water hardness/softener concentration level



1. Tap and hold  for 3 seconds.
2. Turn the Navigation dial to select **Water hardness** or **Softener**.
3. Tap **O** to change the setting.
 - The default setting for water hardness is **Med. (Medium)**, and you can select from **Med., Hard, or Soft**.
 - The default setting for softener concentration level is **1x**, and you can select from **1x, 2x, or 3x**.

NOTE

The amount of softener input decreases if you set the concentration level to 2x or 3x.



Operations

For detailed information on using the washing machine, see the provided one-sheet manual. (Washing machine operation guide)

Cycle and Option list

Cycle

Eco 40-60	Cotton	AI Wash	15' Quick Wash
Super Speed	Intense Cold	Wool	Bedding
Outdoor	Shirts	Towels	Hygiene Steam
Baby Care	Rinse+Spin	Drain/Spin	Drum Clean+
Drum Clean	Cloudy Day	Activewear	Colours
Synthetics	Delicates	Denim	Silent Wash
Mixed Load			


- **Drum Clean+/Drum Clean**

Do not use any cleaning agents for cleaning the drum. Chemical residue in the drum may cause damage to the laundry or the drum of the washing machine.


- Drum Clean+: WW**T9****, WW**T8****, WW**T7****, WW**T6**** models only
- Drum Clean: WW**T5**** models only

- **Super Speed:** WW**T9****, WW**T8****, WW**T7****, WW**T6**** models only
- **Mixed Load:** WW**T5**** models only
- **AI Wash:** WW**T98****, WW**T93**** models only


Additional Functions

Tap  to select from the following options.

Quick Drive	Prewash	Intensive	Bubble Soak
Dose per Wash	Dose per Rinse	My Cycles	Delay End
Child lock			

- **Child Lock:** Tap **O** to lock all the buttons except the  button.
- **Quick Drive:** WW**T8****, WW**T7**** models only

System Functions

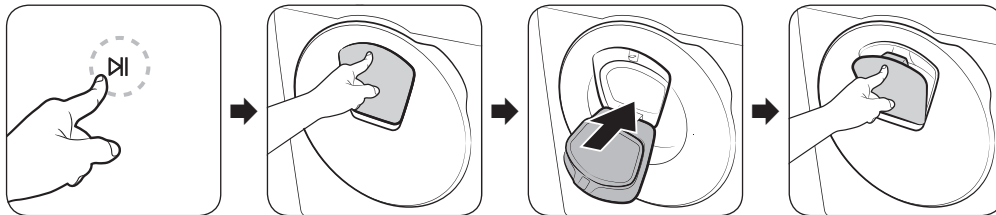
Tap and hold  for 3 seconds to enter the system functions menu to change the following options.

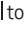

Water Hardness	Softener	AI Pattern	Alarm
Calibration	Wi-Fi	Language	Factory Reset

- **Smart Control:** Turn on Smart Control to enable control of your appliance.

AddWash (applicable models only)

To add laundry after the wash starts, use the AddWash door.



1. Tap  to stop the wash cycle.
2. Press the upper area of the AddWash door to unlock the door. The door will move inward slightly when you press it and then will open.
3. Open the AddWash door fully, and then insert additional laundry through the AddWash door into the drum.
4. Lift the AddWash door back into position, and then lock the door by pushing the upper area of the door until you hear a click. Then, tap  again to resume the wash cycle.

NOTE

The water inside the drum does not leak if the AddWash door is closed properly. Water drops may form around the AddWash door, but water will not leak from inside the drum. This is normal.

The AddWash door does not open and the “AddWash door is open” message appears.

This message appears if you attempt to open the AddWash door while the machine is operating. The machine senses the AddWash door is slightly open and stops operating for safety reasons.

If this happens, close the AddWash door, and then tap  to resume operation.

When can't I open the AddWash door?

You cannot open the AddWash door:

- When the internal temperature is higher than 50 °C.
- During a drum-cleaning cycle such as Drum Clean+. These cycles do not have laundry inside the drum.

CAUTION

Do not try to open the AddWash door while the drying or boiling process is running. Hot steam may leak out of it.



SmartThings

Wi-Fi connection

On your smartphone or tablet, go to **Settings** and turn on the wireless connection and select an AP (Access Point).

- This appliance supports the Wi-Fi 2.4 GHz protocols.

Download

On an app market (Google Play Store, Apple App Store, Samsung Galaxy Apps), find the SmartThings app with a search term of “SmartThings”. Download and install the app on your device.



NOTE

The app is subject to change without notice for improved performance.

Log in

You must first log into SmartThings with your Samsung account. To create a new Samsung account, follow the instructions on the app. You don't need a separate app to create your account.



NOTE

If you have a Samsung account, use the account to log in. A registered Samsung smartphone or tablet user automatically logs in.

To register your appliance to SmartThings

1. Make sure your smartphone or tablet is connected to a wireless network. If not, go to **Settings** and turn on the wireless connection and select an AP (Access Point).
2. Open **SmartThings** on your smartphone or tablet.
3. If a message of “A new device is found.”, select **Add**.
4. If no message appears, select **+** and select your appliance in a list of devices available. If your appliance is not listed, select **Device Type > Specific Device Model**, and then add your appliance manually.
5. Register your appliance to the SmartThings app as follows.
 - a. Add your appliance to SmartThings. Make sure your appliance is connected to SmartThings.
 - b. When registration is complete, your appliance appears on your smartphone or tablet.

Smart Control

After connecting your product to SmartThings, you can control your appliance remotely.

After you have loaded the laundry and closed the door. Tap **Smart Control** and conveniently control your washing machine, adding rinse, spin or dry cycles using the SmartThings app.



Maintenance

For instructions on cleaning the washing machine, please visit the website on the cover of this manual and check the web manual.

Cleaning

Emergency drain

In case of a power failure, drain the water inside the drum before taking out the laundry.

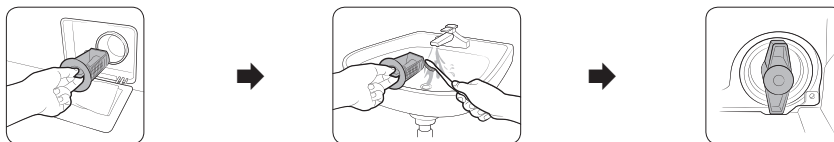


1. Power off and unplug the washing machine from the electrical outlet.
2. Gently press the top area of the **filter cover** to open.
3. Put an empty, spacious container around the cover, and stretch the emergency drain tube to the container while holding the **tube cap (A)**.
4. Open the tube cap and let water in the **emergency drain tube (B)** flow into the container.
5. When done, close the tube cap, and reinsert the tube. Then, close the filter cover.

NOTE

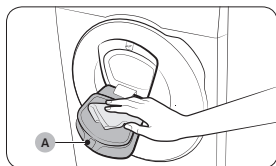
Use a spacious container because the water in the drum may be more than expected.

Debris filter



1. Turn off the washing machine, and unplug the power cord.
2. Drain the remaining water inside the drum. (For details, refer to the **Emergency drain** section.)
3. Gently press the top area of the **filter cover** to open.
4. Turn the debris filter knob to the left, and drain off the remaining water.
5. Clean the debris filter using a soft brush. Make sure the drain pump propeller inside the filter is unclogged.
6. Reinsert the debris filter, and turn the filter knob to the right.

AddWash door (applicable models only)



1. Open the AddWash door.
2. Use a wet cloth to clean the AddWash door.
 - Do not use cleaning agents. Discolouration may occur.
 - Use caution when cleaning the rubber packing and the **locking mechanism (A)**.
 - Dust off the door area regularly.
3. Wipe up and then close the AddWash door until you hear a clicking sound.

Troubleshooting

If there is any problem, check the information message on the LCD screen and follow the on-screen instructions. If the problem persists, please contact the service center.

Checkpoints

If you encounter a problem with the washing machine, first check the table below and try these suggestions.

Problem	Action
Does not start.	<ul style="list-style-type: none"> • Make sure the washing machine is plugged in. • Make sure the door is properly closed. • Make sure the water taps are open. • Tap ▷ to start the washing machine. • Make sure Child Lock is not activated. • Before the washing machine starts to fill, it will make a series of clicking noises to check the door lock and will do quick drain. • Check the fuse or reset the circuit breaker. • Check if power is supplied properly. • Low voltage detected. <ul style="list-style-type: none"> - Check if the power cord is plugged in. • Make sure laundry is not caught in the door. • The “AddWash door is open” message appears when you open the AddWash door without tapping ▷ . If this happens, do one of the following: <ul style="list-style-type: none"> - Press the AddWash door to close properly. Then, tap ▷ and try again. - To add laundry, open the AddWash door and put in laundry. close the AddWash door completely. Then, tap ▷ to resume operation.
Water supply is insufficient, or no water is supplied.	<ul style="list-style-type: none"> • Fully open the water tap. • Make sure the door is properly closed. • Make sure the water supply hose is not frozen. • Make sure the water supply hose is not kinked or clogged. • Make sure there is sufficient water pressure. • Make sure that the cold water tap and the hot water tap are properly connected. • Clean the mesh filter as it may be clogged.
After a cycle, detergent remains in the detergent drawer.	<ul style="list-style-type: none"> • Make sure the washing machine is running with sufficient water pressure. • Make sure the detergent is added to the centre of the detergent drawer. • Make sure the rinse cap is inserted properly. • If using granular detergent, make sure the detergent selector is in the upper position. • Remove the rinse cap and clean the detergent drawer.




Problem	Action
Excessive vibrations or makes noise.	<ul style="list-style-type: none"> • Make sure the washing machine is installed on a level, solid floor that is not slippery. If the floor is not level, use the levelling feet to adjust the height of the washing machine. • Make sure the shipping bolts are removed. • Make sure the washing machine is not in contact with any other object. • Make sure the laundry load is balanced. • The motor can cause noise during normal operation. • Overalls or clothes with metallic decorations can cause noise while being washed. This is normal. • Metal objects such as coins can cause noise. After washing, remove these objects from the drum or filter case. • Redistribute the load. If only one item of clothing needs washing, such as a bathrobe or pair of jeans, the final spin result might be unsatisfactory, and a “Ub” check message will be shown in the display.
Does not drain and/or spin.	<ul style="list-style-type: none"> • Make sure the drain hose is straightened all the way to the drain system. If you encounter a drain problem, call for service. • Make sure the debris filter is not clogged. • Close the door and tap ▷ . For your safety, the washing machine will not tumble or spin unless the door is closed. • Make sure the drain hose is not frozen or clogged. • Make sure the drain hose is connected to a drain system that is not clogged. • If the washing machine is not supplied with sufficient power, the washing machine will temporarily not drain or spin. As soon as the washing machine regains sufficient power, it will operate normally. • Make sure the drain hose is positioned correctly, depending on the connection type. • Clean the debris filter as it may be clogged.
The door does not open.	<ul style="list-style-type: none"> • Tap ▷ to stop the washing machine. • It may take a few moments for the door lock mechanism to disengage. • The door will not open until 3 minutes after the washing machine has stopped or the power has been off. • Make sure all the water in the drum is drained. • The door may not open if water remains in the drum. Drain the drum and open the door manually. • Make sure the door lock light is off. The door lock light turns off after the washing machine has drained.
Excessive suds.	<ul style="list-style-type: none"> • Make sure you use the recommended types of detergent as appropriate. • Use high efficiency (HE) detergent to prevent oversudsing. • Reduce the detergent amount for soft water, small loads, or lightly soiled loads. • Non-HE detergent is not recommended.





Problem	Action
Cannot add additional detergent.	<ul style="list-style-type: none"> • Make sure the remaining amount of detergent and fabric softener is not over the limit.
Stops.	<ul style="list-style-type: none"> • Plug the power cord into a live electrical outlet. • Check the fuse or reset the circuit breaker. • Close the door and tap ▶ to start the washing machine. For your safety, the washing machine will not tumble or spin unless the door is closed. • Before the washing machine starts to fill, it will make a series of clicking noises to check the door lock and will do quick drain. • There may be a pause or soak period in the cycle. Wait briefly, and the washing machine may start. • Make sure the mesh filter of the water supply hose at the water taps is not clogged. Periodically clean the mesh filter. • If the washing machine is not supplied with sufficient power, the washing machine will temporarily not drain or spin. As soon as the washing machine regains sufficient power, it will operate normally.
Fills with the wrong water temperature.	<ul style="list-style-type: none"> • Fully open both taps. • Make sure the temperature selection is correct. • Make sure the hoses are connected to the correct taps. Flush water lines. • Make sure the water heater is set to supply a minimum of 49 °C hot water at the tap. Also, check the water heater capacity and recovery rate. • Disconnect the hoses and clean the mesh filter. The mesh filter may be clogged. • While the washing machine fills, the water temperature may change as the automatic temperature control feature checks incoming water temperature. This is normal. • While the washing machine fills, you may notice just hot and/or just cold water going through the dispenser when cold or warm temperatures are selected. This is a normal function of the automatic temperature control feature as the washing machine determines the water temperature.
Load is wet at the end of a cycle.	<ul style="list-style-type: none"> • Use the High or Extra High spin speed. • Use high efficiency (HE) detergent to reduce oversudsing. • Load is too small. Small loads (one or two items) may become unbalanced and not spin completely. • Make sure the drain hose is not kinked or clogged.
Leaks water.	<ul style="list-style-type: none"> • Make sure the door is properly closed. • Make sure all hose connections are tight. • Make sure the end of the drain hose is correctly inserted and secured to the drain system. • Avoid overloading. • Use high efficiency (HE) detergent to prevent oversudsing. • Check the drain hose. <ul style="list-style-type: none"> - Make sure the end of the drain hose is not placed on the floor. - Make sure the drain hose is not clogged.



Problem	Action
Has odours.	<ul style="list-style-type: none"> Excessive suds collect in recesses and can cause foul odours. Run cleansing cycles to sanitise periodically. Clean the door seal (diaphragm). Dry the washing machine interior after a cycle has finished.
No bubbles are seen (Bubble models only).	<ul style="list-style-type: none"> You may not be able to see bubbles if there is too much items in the drum. Severely contaminated laundry may not generate bubbles.
Can I open the AddWash door at any time?	<ul style="list-style-type: none"> The AddWash door can be opened only when the  indicator appears. However, it does not open in the following cases: <ul style="list-style-type: none"> When the boiling or drying process is running and the internal temperature becomes high If you set the Child Lock for safety reasons When the drum wash or drum drying cycle that does not involve additional laundry is running.
A message appears on the display to alert that dispenser is open.	<ul style="list-style-type: none"> Check if the detergent drawer is closed properly. <ul style="list-style-type: none"> Open the detergent drawer and close it again. Make sure it's closed properly.

- If a problem persists, contact a service center. The number of the service center is on the label attached to the product.
- Samsung is not liable for any damage to the product, any injury, or any other product safety issue caused by a repair which does not follow the instructions in these Repair Guides. Any damage to the product caused by an attempted repair (by anyone other than a Samsung certified service provider) will also not be covered by the warranty.

CAUTION

Defrosting your washing machine

The washing machine may freeze when it drops below 0 °C.

- Turn off the washing machine, and unplug the power cord.
- Pour warm water over the water tap to loosen the water hose.
- Disconnect the water hose, and soak it in warm water.
- Pour warm water into the drum and leave it for about 10 minutes.
- Reconnect the water hose to the water tap.

Specifications

Protecting the environment

- This appliance is manufactured from recyclable materials. If you decide to dispose of this appliance, please observe local waste disposal regulations. Cut off the power cord so that the appliance cannot be connected to a power source. Remove the door so that animals and small children cannot get trapped inside the appliance.
- Do not exceed the detergent quantities recommended in the detergent manufacturer's instructions.
- Use stain removal products and bleaches before the wash cycle only when strictly necessary.
- Save water and electricity by only washing full loads (the exact amount depends upon the cycle used).

Information of main washing cycles

Model	Cycles	Temperature (°C)	Capacity (kg)	Program Time (min)	Residual Moisture Content (%)	Water Consumption (L/ cycle)	Energy Consumption (kWh/Cycle)
WW9*T9*6*** WW9*T8*6***	Cotton	20	4.5	79	53	60	0.23
	Cotton + Intensive	40	4.5	150	44	40	0.56
		60	4.5	160	44	40	0.57
			9.0	211	44	44	0.58
	Synthetics	40	4.0	135	35	66	0.68
WW9*T9*4*** WW9*T8*4***	Cotton	20	4.5	79	53	60	0.23
	Cotton + Intensive	40	4.5	150	44	40	0.56
		60	4.5	160	44	40	0.57
			9.0	211	44	44	0.58
	Synthetics	40	4.0	135	35	66	0.68
WW8*T9*6*** WW8*T8*6***	Cotton	20	4.0	79	53	53	0.23
	Cotton + Intensive	40	4.0	150	44	40	0.50
		60	4.0	150	44	40	0.50
			8.0	211	44	44	0.51
	Synthetics	40	4.0	135	35	66	0.68
WW8*T9*4*** WW8*T8*4***	Cotton	20	4.0	79	53	53	0.23
	Cotton + Intensive	40	4.0	150	44	40	0.50
		60	4.0	150	44	40	0.50
			8.0	211	44	44	0.51
	Synthetics	40	4.0	135	35	66	0.68
WW1*T*****	Cotton	20	5.25	102	56	65	0.25
	Cotton + Intensive	40	5.25	289	44	52	0.70
		60	5.25	289	44	52	0.70
			10.5	299	44	55	0.88
	Synthetics	40	4.0	160	35	85	0.90



Model	Cycles	Temperature (°C)	Capacity (kg)	Program Time (min)	Residual Moisture Content (%)	Water Consumption (L/ cycle)	Energy Consumption (kWh/Cycle)
WW9*T7*6*** WW9*T6*6***	Cotton	20	4.5	102	56	60	0.25
	Cotton + Intensive	40	4.5	284	44	52	0.59
		60	4.5	284	44	52	0.59
			9.0	314	44	55	0.77
	Synthetics	40	4.0	160	35	85	0.90
WW8*T7*6*** WW8*T6*6***	Cotton	20	4.0	102	56	53	0.25
	Cotton + Intensive	40	4.0	254	44	52	0.54
		60	4.0	254	44	52	0.54
			8.0	314	44	55	0.68
	Synthetics	40	4.0	160	35	85	0.90
WW9*T7*4*** WW9*T6*4*** WW9*T5*4*** WW9*T4*4***	Cotton	20	4.5	102	56	68	0.27
	Cotton + Intensive	40	4.5	284	44	39	0.51
		60	4.5	284	44	39	0.51
			9	314	44	47	0.66
	Synthetics	40	4	160	35	68	0.68
WW8*T7*4*** WW8*T6*4*** WW8*T5*4*** WW8*T4*4***	Cotton	20	4	102	56	68	0.27
	Cotton + Intensive	40	4	254	44	33	0.47
		60	4	254	44	33	0.47
			8	314	44	41	0.56
	Synthetics	40	4	160	35	68	0.68
WW8*T7*2*** WW8*T6*2*** WW8*T5*2*** WW8*T4*2***	Cotton	20	4	102	56	68	0.27
	Cotton + Intensive	40	4	254	53	33	0.47
		60	4	254	53	33	0.47
			8	314	53	41	0.56
	Synthetics	40	4	160	35	68	0.68
WW7*T7*4*** WW7*T6*4*** WW7*T5*4*** WW7*T4*4***	Cotton	20	3.5	102	56	68	0.27
	Cotton + Intensive	40	3.5	192	53	31	0.39
		60	3.5	192	53	31	0.39
			7	307	53	36	0.48
	Synthetics	40	4	160	35	68	0.68
WW7*T7*2*** WW7*T6*2*** WW7*T5*2*** WW7*T4*2***	Cotton	20	3.5	102	56	68	0.27
	Cotton + Intensive	40	3.5	192	53	31	0.39
		60	3.5	192	53	31	0.39
			7	307	53	36	0.48
	Synthetics	40	4	160	35	68	0.68

The values on the table have been measured under the conditions specified in Standard IEC60456/EN60456. Actual values will depend on how the appliance is used.



Network standby power consumption

Power consumption	Network standby mode	2.0 W
	Time in networked standby mode (WI-FI)	10 min

Specification sheet

In accordance with applicable energy labelling regulations

“*” Asterisk(s) means variant model and can be varied (0-9) or (A-Z).

Samsung				
Model Name		WW9*T9*6*** WW9*T8*6***	WW8*T9*6*** WW8*T8*6***	WW9*T9*4*** WW9*T8*4***
Capacity	kg	9.0	8.0	9.0
Energy Efficiency		A+++	A+++	A+++
Annual energy consumption (It is based on 220 standard washing cycles for standard cotton course at 60 °C and 40 °C at full and partial load, and the consumption of off and left-on modes. Actual energy consumption will depend on how the appliance is used.)	kWh/yr	130	116	130
Energy Consumption				
The standard 60 °C cotton programme at full load	kWh	0.58	0.51	0.58
The standard 60 °C cotton programme at partial load	kWh	0.57	0.50	0.57
The standard 40 °C cotton programme at partial load	kWh	0.56	0.50	0.56
Weighted power consumption of the off-mode.	W	0.48	0.48	0.48
Weighted power consumption of the left-on mode.	W	5.00	5.00	5.00
Annual water consumption (It is based on 220 standard washing cycles for standard cotton course at 60 °C and 40 °C at full and partial load. Actual water consumption will depend on how the appliance is used.)	L/yr	9400	8100	9400
Spin efficiency class				
Spin-drying efficiency class on a scale from G (least efficient) to A (most efficient)		A	A	A
Maximun Spin Speed	rpm	1600	1600	1400
Residual moisture	%	44	44	44
The Cotton 60 °C + intensive and Cotton 40 °C + intensive programs are the 'standard cotton 60 °C program' and the 'standard cotton 40 °C program'. They are suitable to clean normally soiled cotton laundry and they are the most efficient (concerning water and energy consumption) for this type of laundry. In these programs the actual water temperature may differ from the declared temperature. Please run Calibration Mode after the installation (refer to the "Run Calibration" section on page 15).				
Program duration of the standard program				
The standard 60 °C cotton programme at full load	min	211	211	211
The standard 60 °C cotton programme at partial load	min	160	150	160
The standard 40 °C cotton programme at partial load	min	150	150	150
The duration of the left-on mode (TI)	min	3	3	3
Airborne acoustical noise emissions expressed in dB(A) re 1 pW and rounded to the nearest integer during the washing and spinning phases for the standard 60 °C cotton programme at full load;				
Wash	dB (A) re 1 pW	52	52	52
Spin	dB (A) re 1 pW	75	75	73
Free Standing				

In accordance with applicable energy labelling regulations

"*" Asterisk(s) means variant model and can be varied (0-9) or (A-Z).

Samsung				
Model Name		WW8*T9*4*** WW8*T8*4***	WW1*T*****	WW9*T7*6*** WW9*T6*6***
Capacity	kg	8.0	10.5	9.0
Energy Efficiency		A+++	A+++	A+++
Annual energy consumption (It is based on 220 standard washing cycles for standard cotton course at 60 °C and 40 °C at full and partial load, and the consumption of off and left-on modes. Actual energy consumption will depend on how the appliance is used.)	kWh/yr	116	175	151
Energy Consumption				
The standard 60 °C cotton programme at full load	kWh	0.51	0.88	0.77
The standard 60 °C cotton programme at partial load	kWh	0.50	0.70	0.59
The standard 40 °C cotton programme at partial load	kWh	0.50	0.70	0.59
Weighted power consumption of the off-mode.	W	0.48	0.48	0.48
Weighted power consumption of the left-on mode.	W	5.00	5.00	5.00
Annual water consumption (It is based on 220 standard washing cycles for standard cotton course at 60 °C and 40 °C at full and partial load. Actual water consumption will depend on how the appliance is used.)	L/yr	8100	11660	9400
Spin efficiency class				
Spin-drying efficiency class on a scale from G (least efficient) to A (most efficient)		A	A	A
Maximun Spin Speed	rpm	1400	1400	1600
Residual moisture	%	44	44	44
The Cotton 60 °C + intensive and Cotton 40 °C + intensive programs are the 'standard cotton 60 °C program' and the 'standard cotton 40 °C program'. They are suitable to clean normally soiled cotton laundry and they are the most efficient (concerning water and energy consumption) for this type of laundry. In these programs the actual water temperature may differ from the declared temperature. Please run Calibration Mode after the installation (refer to the "Run Calibration" section on page 15).				
Program duration of the standard program				
The standard 60 °C cotton programme at full load	min	211	299	314
The standard 60 °C cotton programme at partial load	min	150	289	284
The standard 40 °C cotton programme at partial load	min	150	289	284
The duration of the left-on mode (TI)	min	3	3	3
Airborne acoustical noise emissions expressed in dB(A) re 1 pW and rounded to the nearest integer during the washing and spinning phases for the standard 60 °C cotton programme at full load;				
Wash	dB (A) re 1 pW	52	52	54
Spin	dB (A) re 1 pW	73	73	75
Free Standing				

In accordance with applicable energy labelling regulations

"*" Asterisk(s) means variant model and can be varied (0-9) or (A-Z).

Samsung				
Model Name		WW8*T7*6*** WW8*T6*6***	WW9*T7*4*** WW9*T6*4*** WW9*T5*4*** WW9*T4*4***	WW8*T7*4*** WW8*T6*4*** WW8*T5*4*** WW8*T4*4***
Capacity	kg	8.0	9.0	8.0
Energy Efficiency		A+++	A+++	A+++
Annual energy consumption (It is based on 220 standard washing cycles for standard cotton course at 60 °C and 40 °C at full and partial load, and the consumption of off and left-on modes. Actual energy consumption will depend on how the appliance is used.)	kWh/yr	136	130	116
Energy Consumption				
The standard 60 °C cotton programme at full load	kWh	0.68	0.66	0.56
The standard 60 °C cotton programme at partial load	kWh	0.54	0.51	0.47
The standard 40 °C cotton programme at partial load	kWh	0.54	0.51	0.47
Weighted power consumption of the off-mode.	W	0.48	0.48	0.48
Weighted power consumption of the left-on mode.	W	5.00	5.00	5.00
Annual water consumption (It is based on 220 standard washing cycles for standard cotton course at 60 °C and 40 °C at full and partial load. Actual water consumption will depend on how the appliance is used.)	L/yr	8100	9400	8100
Spin efficiency class				
Spin-drying efficiency class on a scale from G (least efficient) to A (most efficient)		A	A	A
Maximum Spin Speed	rpm	1600	1400	1400
Residual moisture	%	44	44	44
The Cotton 60 °C + intensive and Cotton 40 °C + intensive programs are the 'standard cotton 60 °C program' and the 'standard cotton 40 °C program'. They are suitable to clean normally soiled cotton laundry and they are the most efficient (concerning water and energy consumption) for this type of laundry. In these programs the actual water temperature may differ from the declared temperature. Please run Calibration Mode after the installation (refer to the "Run Calibration" section on page 15).				
Program duration of the standard program				
The standard 60 °C cotton programme at full load	min	314	314	314
The standard 60 °C cotton programme at partial load	min	254	284	254
The standard 40 °C cotton programme at partial load	min	254	284	254
The duration of the left-on mode (TI)	min	3	3	3
Airborne acoustical noise emissions expressed in dB(A) re 1 pW and rounded to the nearest integer during the washing and spinning phases for the standard 60 °C cotton programme at full load;				
Wash	dB (A) re 1 pW	54	53	53
Spin	dB (A) re 1 pW	75	74	74
Free Standing				

In accordance with applicable energy labelling regulations

"*" Asterisk(s) means variant model and can be varied (0-9) or (A-Z).

Samsung				
Model Name		WW8*T7*2*** WW8*T6*2*** WW8*T5*2*** WW8*T4*2***	WW7*T7*4*** WW7*T6*4*** WW7*T5*4*** WW7*T4*4***	WW7*T7*2*** WW7*T6*2*** WW7*T5*2*** WW7*T4*2***
Capacity	kg	8.0	7.0	7.0
Energy Efficiency		A+++	A+++	A+++
Annual energy consumption (It is based on 220 standard washing cycles for standard cotton course at 60 °C and 40 °C at full and partial load, and the consumption of off and left-on modes. Actual energy consumption will depend on how the appliance is used.)	kWh/yr	116	103	103
Energy Consumption				
The standard 60 °C cotton programme at full load	kWh	0.56	0.52	0.52
The standard 60 °C cotton programme at partial load	kWh	0.47	0.39	0.39
The standard 40 °C cotton programme at partial load	kWh	0.47	0.39	0.39
Weighted power consumption of the off-mode.	W	0.48	0.48	0.48
Weighted power consumption of the left-on mode.	W	5.00	5.00	5.00
Annual water consumption (It is based on 220 standard washing cycles for standard cotton course at 60 °C and 40 °C at full and partial load. Actual water consumption will depend on how the appliance is used.)	L/yr	8100	7400	7400
Spin efficiency class				
Spin-drying efficiency class on a scale from G (least efficient) to A (most efficient)		B	B	B
Maximum Spin Speed	rpm	1200	1400	1200
Residual moisture	%	53	53	53
The Cotton 60 °C + intensive and Cotton 40 °C + intensive programs are the 'standard cotton 60 °C program' and the 'standard cotton 40 °C program'. They are suitable to clean normally soiled cotton laundry and they are the most efficient (concerning water and energy consumption) for this type of laundry. In these programs the actual water temperature may differ from the declared temperature. Please run Calibration Mode after the installation (refer to the "Run Calibration" section on page 15).				
Program duration of the standard program				
The standard 60 °C cotton programme at full load	min	314	307	307
The standard 60 °C cotton programme at partial load	min	254	192	192
The standard 40 °C cotton programme at partial load	min	254	192	192
The duration of the left-on mode (TI)	min	3	3	3
Airborne acoustical noise emissions expressed in dB(A) re 1 pW and rounded to the nearest integer during the washing and spinning phases for the standard 60 °C cotton programme at full load;				
Wash	dB (A) re 1 pW	53	54	54
Spin	dB (A) re 1 pW	74	74	74
Free Standing				

From 1 March 2021, an energy label with the range of A+++ to D is only valid in non-EU countries which have not adopted EU rescaled energy labelling regulations.

Memo

SAMSUNG



DC68-04197G-01