



Set up with videos:

Scan QR code or visit

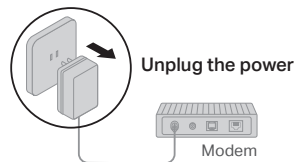
<https://www.tp-link.com/support/setup-video/#wi-fi-routers>



1 Connect the Hardware

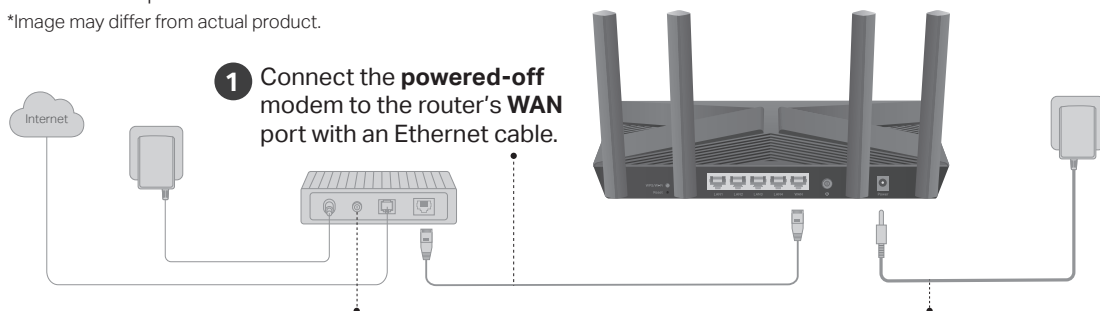


- **Unplug the power** to turn off your modem, if any, and remove the backup battery if it has one.
- Place the router horizontally and orient the antennas vertically.



If your internet connection is through an Ethernet cable directly from the wall instead of through a DSL / Cable / Satellite modem, connect the Ethernet cable to the router's WAN port, and then follow steps 3 and 4 to complete the hardware connection.

*Image may differ from actual product.



2 Power on the modem, and then wait about **2 minutes** for it to restart.

4 Verify that the hardware connection is correct by checking the following LEDs.



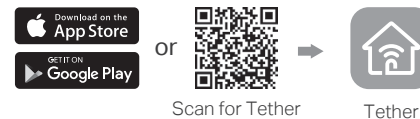
Note: If the 2.4GHz LED and 5GHz LED are off, press and hold the WPS/Wi-Fi button on the back for more than 2 seconds, then release the button. Both the LEDs should turn solid on.

3 Connect the power adapter to the router and turn on the router.

2 Set Up the Network

Method ONE: Via TP-Link Tether App

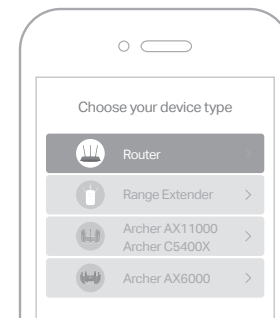
1. Download the Tether app.



2. Open the Tether app and log in with your TP-Link ID.

Note: If you don't have an account, create one first.

3. Tap the **+** button in the Tether app and select **Router > Wireless Router**. Follow the steps to complete the setup and connect to the internet.

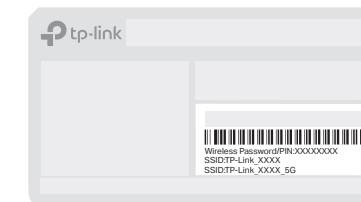


😊 Enjoy the internet !

Method TWO: Via a Web Browser

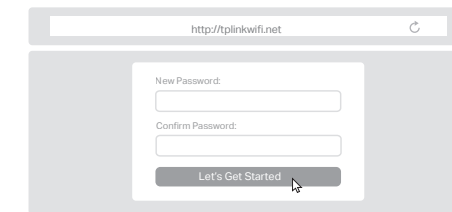
1. Connect your device to the router wirelessly or with an Ethernet cable.

The default wireless network names (SSIDs) and password are printed on the label at the bottom of the router.



2. Launch a web browser, and enter <http://tplinkwifi.net> or <http://192.168.0.1> in the address bar. Create a password to log in.

Note: If the login window does not appear, please refer to **Q1 of Need Help?** in this guide.



3. Follow the step-by-step instructions to set up the internet connection and register for the TP-Link Cloud service.

😊 Enjoy the internet !

Button Explanation

WPS/Wi-Fi Button

Press the button for 1 second, and immediately press the WPS button on your client to start the WPS process.

Press and hold the button for more than 2 seconds to turn on or off the wireless function of your router.

Reset Button

Press and hold the button until all LEDs turn on to reset the router to its factory default settings.

TP-Link Cloud Service

TP-Link Cloud service provides a better way to manage your cloud devices. You can set up and enjoy cloud functions via the **Tether app** or through the web management page at <http://tplinkwifi.net>.

Remote Management

Easily manage your home network when you are out and about via the Tether app on your smartphone or tablet.

Timely Upgrade Notifications

Keep you informed of the latest firmware updates, ensuring that your router stays at its best.

One for All

Manage multiple TP-Link Cloud devices, all from a single TP-Link ID.



To communicate with TP-Link users or engineers, visit <https://community.tp-link.com> to join TP-Link Community.



For technical support, replacement services, user guides and more, please visit <https://www.tp-link.com/support>



Email techwriter@tp-link.com.cn to give suggestions.

- Keep the device away from water, fire, humidity or hot environments.
- Do not attempt to disassemble, repair, or modify the device.
- Do not use any other chargers than those recommended.
- Do not use damaged charger or USB cable to charge the device.
- Do not use the device where wireless devices are not allowed.
- Adapter shall be installed near the equipment and shall be easily accessible.

Need Help?



Q1. What should I do if I can't access the web management page?

- Reboot your router and try again.
- If the computer is set to a static IP, change its settings to obtain an IP address automatically.
- Verify that <http://tplinkwifi.net> is correctly entered in the web browser. Alternatively, enter <http://192.168.0.1> or <http://192.168.1.1> in the web browser.
- Use another web browser and try again.
- Disable and enable the network adapter in use.

Q2. What should I do if I can't access the internet?

- Reboot your modem and router, then try again.
- Check if the internet is working normally by connecting a computer directly to the modem via an Ethernet cable. If it is not, contact your internet service provider.
- Log in to the web management page of the router, and go to the **Network Map** page to check whether the internet IP address is valid or not. If it is, go to **Advanced > Quick Setup** to set up again; otherwise, check the hardware connection.
- For cable modem users, log in to the web management page of the router and go to **Advanced > Network > Internet > MAC Clone**. Select **Clone Current Device MAC** and click **Save**. Then reboot both the modem and the router.

Q3. What should I do if I forget my wireless password?

- If you have not changed the default wireless password, it can be found on the label at the bottom of the router.
- Connect a computer directly to the router using an Ethernet cable. Log in to the router's web management page at <http://tplinkwifi.net>, and go to the **Wireless** page to retrieve or reset your wireless password.

Q4. What should I do if I forget my web management page password?

- If you are using a TP-Link ID to log in, click **Forgot Password?** on the login page and then follow the instructions to reset it.
- Alternatively, press and hold the Reset button on the back until all LEDs turn on. Then visit <http://tplinkwifi.net> to create a new login password.

Quick Installation Guide



AX1500 Wi-Fi 6 Router

